

Greyhound Monthly Victoria



METRO
Festival of Racing
November 2020

FEATURED INSIDE

2020 MELBOURNE CUP: THE WORLD'S GREATEST GREYHOUND RACE

**+ TOMMY SHELBY TO TAKE ON
VIC TOPGUNS**

**+ GIPPSLAND FESTIVAL OF RACING:
DATES AND DETAILS**



CONTENTS

3	CEO'S UPDATE
4	AT THE POST
14	FIVE FREEDOMS AND GREYHOUND RACING
16	WELFARE AND RE-HOMING REPORT
18	INTEGRITY REPORT
19	UPCOMING GRV VIC BRED SERIES
21	RACING CALENDAR
30	LATEST LITTERS AND MISSES
34	CLUB/TRIALS DIRECTORY

PARTICIPANT SUPPORT LINE

Have a general question on a greyhound racing related matter?

Need help to better understand the various requirements of being a greyhound racing participant?

Contact the Participant Support Line

Phone **1300 144 360**

Email **participants@grv.org.au**

GRV FEEDBACK OFFICE

Do you have any feedback for GRV? A complaint, a compliment or suggestion about how we could do things differently? Whether you're a participant, stakeholder or member of the community, we'd like to hear from you. GRV values all feedback as it helps us to do our job better and improves the overall conduct of the sport in Victoria.

How do I make a formal complaint or provide a suggestion or compliment?

You can do so either by letter, email, phone, fax or by using our online form at grv.org.au/feedback

Email comments@grv.org.au

Phone (03) 8329 1100

Fax (03) 8329 1000

Post Feedback Office

c/o Greyhound Racing Victoria
46 – 50 Chetwynd Street,
West Melbourne Vic 3003

GRV will acknowledge your complaint, compliment or suggestion in writing with a reference number within five business days.

Please note: Information about integrity matters should continue to be referred to the Greyhound Racing Integrity Unit (GRIU) which can be contacted via the GRIU Hotline: 1300 856 109



**GRV SUPPORT LINE
AVAILABLE 24HRS**

For urgent matters including lost, found or deceased greyhounds.

Call **03 83291100** and press #1 to speak to GRV staff.



EDITOR-IN-CHIEF: ANDREW COPLEY
MANAGING EDITOR: PHIL WEIR

Greyhound Monthly Victoria (GMV) magazine is produced by Greyhound Racing Victoria (GRV), the governing body of greyhound racing in this state.

GRV strongly encourages all Victorian greyhound racing participants - in particular breeders and trainers - to take the time to read each issue of GMV to ensure they are across relevant key issues.

Each edition of GMV aims to provide an overview of key happenings in relation to Victorian greyhound racing that occurred during the previous month, as well as promoting significant and relevant upcoming activities and events.

It is GRV's goal to have each edition of Greyhound Monthly Victoria available on-line at grv.org.au on or before the last day of the previous month, and arriving in letter boxes by the 10th day of each month.

**DO YOU HAVE A STORY IDEA OR FEEDBACK
TO MAKE GREYHOUND MONTHLY EVEN
BETTER?**

LET US KNOW BY EMAILING PWEIR@GRV.ORG.AU

CEO's Update

While we are all pleased with the easing of restrictions across Victoria, a reminder that health and safety protocols including masks, social distancing and health checks on entry are still in place for all Victorian race meetings and trials and that metro participants still need their work permits when travelling to regional meetings.

Looking ahead to opening up race meetings for non-essential personnel and clubs for non-racing related activities, GRV will continue to follow the advice of Victoria's Chief Health Officer and work with Greyhound Clubs Victoria (GCV) and the individual clubs on how best and when to open up while also maintaining a safe working environment. In the meantime, the contract with Event Aid to provide entry health checks at clubs has been extended into 2021.

Speaking of opening up clubs, I'm pleased to announce that funding and vendors for the new Traralgon track project have been fully signed off and construction will begin in the next month. Around \$5 million will be invested in the project with local businesses supplying most of the needed goods and services. At this stage, the goal is to have the new track finished and fully tested by mid-2021 and then open for racing soon after as a state-of-the-art venue for safe and exciting racing. And GRV is now in discussions with clubs about safer racing, and initiatives to support enabling the racetrack to be a safe work environment for the dog. Under consideration is new capital works for next year, including more straight tracks. On this note I would also like to mention the great work by Sandown in the remediation of its track which has now resolved some major drainage issues raised as safety concerns by trainers.

We have reflected on the effectiveness of the Greyhound Recovery Initiative and are making a number of changes to improve the level of support to injured dogs at the track. More details will follow in next month's edition.

It is envisaged that as we move forward the combination of new tracks and the introduction of a 13th race at some Victorian race meetings will provide more opportunities for Victorian greyhounds at all levels. Our goal is to increase revenue for

prizemoney and other returns and for further investment in initiatives that lead to safer racing.

GRV's racing team will keep you updated on these and other issues through a new email bulletin every second Friday for participants on matters relating to meetings, features and grading. The bulletin will also highlight any distance races that are in the program, and any matters of interest such as the expressions of interest for the Racing Reference Group positions.

At the moment, the racing team is working through a summer program which will be specifically focused around meetings traditionally affected by hot weather. On this subject, while there have been no substantive changes, can I ask you to make sure you are up to date on GRV's Hot Weather and Transport Policies and that you start preparing your fire plans if you haven't done so already.

Looking ahead for the rest of spring and summer, GRV is also putting new promotion and marketing initiatives in place to help retain people who discovered the sport during lockdown and to bring in new customers. This includes a program of Festivals of Racing focused on different regions across the State and expanded media coverage, both on and off the track, such as more live Saturday morning racing and the return of The Thrill of The Chase TV program on the Seven network.

It has been a very testing last few months and again I thank participants for your patience and cooperation and club and race day staff for their great work under unprecedented circumstances. Now, as restrictions are lifting and the days are getting longer and warmer, we can all enjoy what promises to be a great summer of racing for our sport.

Alan Clayton

Chief Executive Officer
Greyhound Racing Victoria

GENERAL ENQUIRIES

Greyhound Racing Victoria
46-50 Chetwynd Street
West Melbourne, Victoria, 3003

Hours:

Monday - Friday: 8:30am - 4:30pm

Phone: (03) 8329 1100

Fax: (03) 8329 1000 /
(03) 8329 1001

ABN: 76 642 748 029

RACING SERVICES AND REGISTRATIONS

Phone: (03) 8329 1100

Email: info@grv.org.au

NOMINATIONS

Phone: (03) 8329 1111

Monday - Friday: 7:30am - 12noon

Online Nominations:
24 hours a day, 7 days a week.

SCRATCHINGS

Phone: (03) 8329 1100

Weekdays: 7:30am - 4:30pm

Sat/Sun: 7:30am - 9:00am &
3:00pm - 4:30pm

GRV BOARD

Peita Duncan (Chair)
Greg Miller (Deputy Chair)
Emmett Dunne
Rob Greenall
Marika McMahon
Lisa Tripodi



GREYHOUND ADOPTION PROGRAM

At the post

Victoria's group race winners during October.

Group 3 Sydney Cup (720m)

WENTWORTH PARK, 16 OCTOBER

1st HERE'S TEARS

Breeding:	Male Sep '17 Fernando Bale x Tears Siam
Breeder:	Michael Ivers, Somersby NSW
Owner:	Millmi syndicate (Camilla Limon), Wongarbron NSW
Trainer:	Robert Britton, Lara VIC
First prize:	\$100,000
Odds:	\$2.15F
Time:	42.33sec
Margin:	3.00L
2nd:	Sunset Bourbski
3rd:	Show Me Confetti

How the race was won: Here's Tears (Box 1) came out running and went all-the-way. He set up a 5L break at the halfway mark, with Victorian counterpart Sunset Bourbski (\$2.30) midfield and with "a stack to do". On the line, Here's Tears had 3L to spare over Sunset Bourbski, with NSW stayer Show Me Confetti (\$101) a 'bridesmaid' in third place a further three lengths away, in 42.33sec. Here's Tears – a younger brother of ageless staying king Tornado Tears, who was a shock scratching from the race – notched his 19th win from 51 starts.



Here's Tears

Group 3 TAB Great Chase (525m)

THE MEADOWS, 21 OCTOBER

1st DR. TUCKER

Breeding:	Male Oct '18 Bernardo x Dr. Dawn
Breeder/Owner/Trainer:	William McMahon, Darriman VIC
First prize:	\$47,000
Odds:	\$5.10
Time:	30.05sec
Margin:	1.6L
2nd:	Earn The Answers
3rd:	Sovereign Wind

How the race was won: Rising star Dr. Tucker (Box 5) put on an all-the-way clinic defeating Earn The Answers (\$6.50) by 1.6L, with Sovereign Wind (\$7.30) a further 4.6L away third in 30.05sec. Dr. Tucker – rated by one form expert as a "carbon copy of Simon Told Helen", who won last year's Great Chase – notched his eighth win from 11 starts. It was also his fifth successive win and his sixth win from seven starts at The Meadows.



Dr. Tucker with trainer Bill McMahon after winning the TAB Great Chase

Group 2 Beckley Centre Geelong Gold Cup (520m)

GEELONG, 23 OCTOBER

1st SIMON TOLD HELEN

Breeding: Male Jan '18 Barcia Bale x Who Told Lindylu

Breeder/Owner: Emma's Boys syndicate (Brian Parsons), Corio VIC

Trainer: David Burnett, Little River VIC

First prize: \$50,000

Odds: \$4.00

Time: 29.98sec (Best)

Margin: 1.03L

2nd: Bobby The Brute

3rd: Tiggerlong Tonk

How the race was won: Australian Greyhound of the Year and the nation's No. 1 sprinter, Simon Told Helen (Box 7) said "catch-me-if-you-can" in notching his eighth group race win. A four-time G1 winner, Simon Told Helen (\$4.00) registered his 23rd win from 38 starts defeating surprise packet Bobby The Brute (\$12.40) by 1.03L, with ultimate professional Tiggerlong Tonk (\$5.70) a further 0.01L away third in 29.98sec (Best). It was his sixth win from his past 10 starts.

Group 3 Northern Districts Cup (450m)

SHEPPARTON, 31 OCTOBER

1st SONNY DAZE

Breeding: Male Oct '18 Don't Knocka Him x Big Bang Marjen

Breeder: David Jensen, Heathcote VIC

Owner: Bonnie Webb, Toolleen VIC

Trainer: Rodney Clark, Toolleen VIC

First prize: \$25,000

Odds: \$4.10

Time: 25.23sec

Margin: 4.29L

2nd: All Inn Morgan

3rd: Kalter

How the race was won: Punters 'forgot' about fastest qualifier Sonny Daze (\$4.10) who commenced well from Box 2 and was quick to gain the ascendancy. Once in front, he never looked in doubt as he cruised to a 4.29L win over All Inn Morgan (\$14.60), with rank outsider Kalter (\$41.10) a further 2.97L way third in 25.23sec. Now headed for the 'bright city lights', Sonny Daze notched his seventh win from 18 starts – including three of his past four. It was also his third win (with two seconds) from six starts over 450m at Shepparton.



Simon Told Helen and David Burnett



Sonny Daze with trainer Rod Clark

Wood 'n' Crete Products lands \$10K at TAB Great Chase Grand Final

BY PHILIPPA LAVERY

Greyhound racing's 2020 TAB Great Chase Grand Final may have looked different to the 22 community groups from across Victoria that watched the race via a private Zoom link, but all the excitement and adrenaline that the Grand Final brings to The Meadows each year was still very apparent.

The Great Chase Grand Final traditionally draws more than 500 people to the racetrack for what is a wonderful celebration, however crowds are currently not allowed on course because of the COVID-19 pandemic. Despite this, groups which attended last year's Grand Final still had the chance to win a share in \$24,000 prize money, including a top prize of \$10,000 for the group paired with the winning greyhound.

Following introductory speeches from GRV Chair Peita Duncan, CEO Alan Clayton and TAB General Manager Wagering, Trevor Parkes, a random draw took place partnering the eight competing greyhounds with eight of the community groups – all of whom belong to Victoria's disability sector.

All eyes were on the screens as the race was shared for all to witness, and coming in first place was promising greyhound Dr. Tucker, trained at Darriman by Bill McMahon, who was partnered with Wood 'n' Crete Products, an organisation which centres around providing employment opportunities for people with disabilities.

Based in Ararat, Wood 'n' Crete Products manufactures cement, lime, plaster and concrete.

The organisation's product coordinator, Russell Streeter was thrilled by the result.

"We've been attending the Great Chase since the mid-2000s. With the COVID-19 situation the Great Chase Community Days didn't go ahead this year, which was a real shame because our guys love going to the races at Horsham each year. They talk about it all year long," Russell explained.

"The \$10,000 will come in very handy. We are currently looking at building a new activity room and undercover area at our facility, so this money will go a long way towards making that happen."

Meanwhile, the remaining seven groups drawn each collected \$2,000.

Since 2003 GRV has donated more than \$650,000 to community organisations that care for intellectually or physically disabled people through the Great Chase, with the event being supported by TAB since 2008.

All 13 Victorian greyhound clubs participate and invite their local community groups – clients and carers – to a special community day each year, where they receive free meals, showbags and are partnered with dogs competing on the day for the opportunity to win prize money.

While the on-course element didn't go ahead in 2020, GRV has already started planning for the 2021 TAB Great Chase series, which will come back better and bigger than ever before during spring.



2020 TAB Great Chase Grand Final

Greyhounds & Community Groups

1. EQUALIZER - Estia Health Yarra Valley (Yarra Junction)
2. JEPARA - Scope Weerona Avenue (Bendigo)
3. CARRY ON MAXWELL – Nextt (Sunshine)
4. SOVEREIGN WIND - McCallum Disability Services (Alfredton)
5. DR. TUCKER - Wood 'N Crete (Ararat)
6. EARN THE ANSWERS - All Abilities Sports (Latrobe Valley)
7. MEPUNGA SPARKLE - Goulburn Options (Seymour)
8. PAINT PEELER - The Bridge Connects (Dandenong)





**SATURDAY,
DECEMBER 12**

NOMINATIONS

The 2020 Ballarat Function Centre Ballarat Cup
S/E Group 2 – 450m Final (Maidens Ineligible)
\$47,000 First Prize

Nominations Close
Wednesday December 2, 2020 at 10.00am

Heats Saturday December 5, 2020 - \$5,280 First Prize

All nominations directly to GRV via fasttrack.grv.org.au



Participant Support Line FAQs

What can the Participant Support Line (PSL) help me with?

The PSL can assist with any enquiry relating to your obligations or responsibilities as a greyhound racing participant. In particular, the PSL is able to provide clarification, guidance or assistance on a range of topics or issues, including:

- Current issues affecting greyhound racing such as COVID-19
- Current GRV call to action campaigns such as updating greyhound locations in FastTrack
- Greyhound Kennel or Facility Management & Construction
- Code of Practice
- Information relating to greyhound Breeding, Whelping, Rearing, Education or Training Activities
- Planning & Council Permits
- Racing rules and policies

How do I contact the Participant Support Line?

You can do so by phone or email. If the line is busy or you have called out of hours, please leave a message that includes your name, participant number and a brief outline of the reason for your call.

Phone **1300 144 360**

Email **participants@grv.org.au**

I'm not sure if the Participant Support Line can help me?

Don't worry, if the team is not able to help, they will know the right GRV department that can.

I need answers urgently. How quick will you get back to me?

Most enquiries to the PSL can be resolved promptly, however please understand that some may take longer than expected due to complexity or if further information is required.

It can come out of the blue...

24 hour confidential phone support for psychological counselling, including financial coaching, introductory legal advice, nutrition wellbeing coaching and on-site counselling.



Greyhound Participant Support Program (GPS)

Participants in need of professional and confidential help with mental health issues, budgeting or debt management coaching, introductory legal advice or diet and nutrition advice for themselves or immediate family can call the independent Greyhound Participant Support Program on **1300 739 550**. This program is free to participants and is provided by Assure Programs, who also offer 24 hr emergency psychological phone support. For more information, visit www.greyhoundcare.grv.org.au/greyhound-participant-support/.

**WATCH EVERY VICTORIAN GREYHOUND RACE LIVE
DOWNLOAD THE NEW WATCHDOG MOBILE FORM GUIDE**



Greyhound
CARE + STANDARDS



BREEDING TIPS WITH BARRY SMITH

Multiple Group 1 winning breeder and the man behind the famous 'Mepunga' bloodline

The series includes:

- The basics of successful greyhound breeding
- The cost of breeding greyhounds
- Selecting a sire
- Breeding to sires with international bloodlines
- Broodmatrons and young pups
- Choosing a pup
- Interacting with pups
- Lead training and gamesmanship
- Housing and exercising pups

Watch these videos and more at: greyhoundcare.grv.org.au/video



Magpie triggers technological trickery

BY ANDREW COPLEY

Shrewd observers may have noticed a discrepancy between the moving vision and the photo finish in Race 2 at The Meadows on 26 September.

Vision of the race shows a magpie flying in the opposite direction to which the greyhounds were running as they crossed the finish line, yet the photo finish shows the magpie travelling in the same direction as the dogs.

Callan Brook, of Brook Group, the organisation behind the greyhound racing's FinishLynx photo finish system, has provided an explanation.

"The FinishLynx Photo finish cameras are what is called a line scan camera. The camera will take timestamped vertical captures as small as a pixel width and will then thread these together in the FinishLynx software to present the photo finish images on the computer screen," Brook said.

"In the FinishLynx software settings we tell the software the direction that the objects will cross the finish line, and the software will thread the captures in that direction."

"Hence anything crossing the finish line will be heading in the direction that the images are told to thread together."

"At The Meadows, the FinishLynx Vision Pro camera takes more than 5000 scans per second and threaded to the right hand direction."

Mystery solved – and most of us may never have known this if it weren't for that magpie.

Q&A with Callan Brook

Q. How often does this sort of incident (the magpie situation) occur in greyhound racing?

CB: It does happen, however not too often for greyhound racing as the finish line for greyhound racing is well secured from anything entering the track. The reason for the Magpie at The Meadows to be so clear in the final result was it was probably flying at a similar speed to the greyhounds. Usually if the speed does not match similar to greyhounds speeds and, based on how the technology works, the rogue object would be unidentifiable.

Q. How long has the FinishLynx system been in place in greyhound racing?

CB: Digital Photofinish by FinishLynx was first brought to Australia in 1990s and Gosford Greyhound Racing Club was one of the very first adopters. Sandown/The Meadows have had FinishLynx since the 1990s as well. Photofinish has long been a critical component of greyhound racing as there is no technology more accurate and provide more proof of a finish result than the Photofinish technology. Prior to digital Photofinish there was black and white slit film cameras. Sandown still has the dark room upstairs from those days. You would have to wait for the film to be developed before an official result could be published.

Q. Is the same technology in operation across all our 13 Victorian greyhound tracks?

CB: Yes all 13 GRV venues use FinishLynx Photofinish systems and Brook timing system for race day and trial days. In fact, all major greyhound racing venues in Australia and New Zealand use FinishLynx Photofinish with Brook Timing.

Q. What other sports / industries use the FinishLynx Photofinish system?

CB: Any sport which involves racing to a finish line would be using Photofinish at official levels. This includes rowing, athletics, motorsport and thoroughbred racing just to name a few.

**WATCH EVERY VICTORIAN GREYHOUND RACE LIVE
DOWNLOAD THE NEW WATCHDOG MOBILE FORM GUIDE**



FEATURED CLUB



Warragul Greyhound Racing Club

Manager Profile

Tony Mitchell

Tony Mitchell was born and lived in the Outer Eastern suburbs of Melbourne, where he played football and cricket both locally and had a short, but not so glorious short career with Essendon under 19's. Tony has spent the past 25 years in football administration via the Yarra Valley Mountain District Football League, a former VCFL Vice President and current Chair of AFL Outer East, all on a volunteer basis.

He spent most of his working career with the NAB in Senior Management roles in Melbourne, also operating his own businesses. Over the past 7 years he has been involved in the greyhound industry with a short stint maintaining and developing synthetic tracks within the thoroughbred industry in 2019.

Tony was appointed as CEO at Cranbourne Greyhound Racing Club in January 2015, then appointed to GRV as Clubs and Infrastructure Manager in July 2017. In March 2020 he was appointed General Manager of Warragul Greyhound Racing Club where he is looking forward to new industry challenges.

Fun Facts, with Neil Brown

Without much doubt, one of the best dogs to race from the Warragul area is the 1977 Australian Cup winner Listowel Sue, bred raced and trained by Drouin resident Alan Fairlie. One of the great greyhound people you are ever likely to meet, Alan is a long time Warragul Committeeman and Life Member. His venture into greyhound racing resulted from a lucky quinella which paid \$185. With that money he brought Listowel Sue's dam Cindy Lake for \$200. He put her to Tivoli Scout who he and his son liked the look of better than his much more successful brother Tivoli Chief. Tivoli Scout only sired 18 pups with only two of any note the resultant litter to Cindy Lake Listowel Sue and her smart brother Amarco Boy, Cindy later produced outstanding stayer Rawpack to Leader's Champion. Alan had not drawn a red box for 12 months before the cup series then drew three in a row, she started odds on and won easily. It was the first-year handlers wore dinner suits and Alan thought "Sue" would not know who he was so for the week prior to the final he handled her every day in a dinner suit on his property. Only thing was, on Cup night all the handlers wore dinner suits. Listowel Sue begun well, settled behind the early leader then took the lead approaching the home turn and raced away for a brilliant win.

Read the full history at <https://gcv.org.au/locations/warragul>





GRV is proud to present Victorian Greyhound Gippsland Festival of Racing, which will run throughout December to February.

The Gippsland Festival of Racing brings together fantastic racing across three of Gippsland racing venues.

Sale Greyhound Racing Club - Warragul Greyhound Racing Club - Cranbourne Greyhound Racing Club

2020 – 2021 Gippsland Festival of Racing

Event	Date	Timeslot	Group	Distance	First Prize
SALE GREYHOUND CLUB					
Sale Cup Prelude	29 Nov 2020	Night		650m	\$2185
Rotti Security Sale Distance Championship SE Heats	6 Dec 2020	Night		650m	\$1900
Rotti Security Sale Distance Championship SE Finals	13 Dec 2020	Night		650m	\$10,000
Gippsland Festival Heats	18 Dec 2020	Night		440m	\$1650
Gippsland Festival Sprint Final	26 Dec 2020	Night		440m	\$10,000
Sale Motor Group Summer Cup heats	18 Dec 2020	Night		520m	\$1650
Sale Motor Group Summer Cup SE	26 Dec 2020	Night		520m	\$6645
Dunkley Machinery Rising Stars RW Heats	18 Dec 2020	Night		440m	\$1405
Dunkley Machinery Rising Stars RW (1-4 wins) Finals	26 Dec 2020	Night		440m	\$6645
Sale Cup Heats	20 Dec 2020	Night		650m	\$6030
Sale Cup Final	26 Dec 2020	Night	Group 1	650m	\$75,000
WARRAGUL GREYHOUND CLUB					
Warragul Cup Heats	8 Jan 2021	Night		460m	\$5,280
Warragul Cup Final	16 Jan 2021	Night	Group 2	460m	\$47,000
CRANBOURNE GREYHOUND CLUB					
Cranbourne Cup Heats	30 Jan 2021	Night		520m	\$5,280
Cranbourne Cup Final	6 Feb 2021	Night	Group 2	520m	\$50,000

This year will be a little different due to the COVID-19 restrictions. For the first time, our events will be ticketed to comply with on-course crowd restrictions due to COVID -19 regulations. Be part of the action, see the dogs fly and hold your breath for the winner to cross the line. Watch live and Free on the Watchdog App.

Vale David Hoey

Greyhound Clubs Victoria (GCV) has paid tribute to the late David Hoey, who sadly passed away on 4 October following a long battle with Leukaemia.

David was a long-serving Manager of the Geelong Greyhound Racing Club and will be remembered fondly as a man of great integrity and an icon within the Geelong sporting community.

David was the General Manager of NBL basketball team, the Geelong Supercats from 2009-2014 before taking up the reins at the Beckley Centre.

GCV Chairman Adrian Scott spoke on behalf of the greyhound industry at a private service in Geelong, where he praised Dave as an integral part in the recent formation of GCV.

David's passion for greyhound racing and his measured approach ensured he was held in high esteem by fellow club managers and the sport more broadly.



WA star to take on Vic Topguns

BY MOLLY HAINES

WA sensation Tommy Shelby has been selected for a start in the \$150,000 to-the-winner Group 1 TAB Topgun (525m) invitational, to be run at The Meadows on Saturday night, 7 November.

Named after the leading character in the popular Netflix series, Peaky Blinders, Tommy Shelby is currently in the hands of caretaker trainer Kelvyn Greenough at Pearcedale.

Tommy Shelby's first Victorian campaign is also likely to incorporate a crack at the TAB Melbourne Cup series after earning a start in a heat at Sandown Park on 20 November after winning the WA State Sprint Final.

A winner of 20 races from 28 starts, Tommy Shelby is one of the quickest greyhounds in Australia, and a portion of his prize money has been donated to charity which has grown his fan base.

The son of Fernando Bale and Serena Fly High finished third in last month's Million Dollar Chase Final at Wentworth Park after recording the fastest qualifying time at Wentworth Park (29.58sec).

This is the first time Tommy Shelby and trainer Steve Withers won't be side by side since the greyhound's career started, making it an emotional time for the duo.

"I know he is in great hands in Victoria, but it doesn't make it any easier not being there for the journey," Withers said.

The box draws for the Group 1 Topgun and Group 1 Topgun Stayers will be announced at The Meadows on Hume Cup night, Monday 2 November.

Topgun 525m field (alphabetical order):

Catch The Thief (VIC), Christo Bale (VIC), Golden Night (SA), Oh Mickey (QLD), Shima Shine (VIC), Simon Told Helen (VIC), Tiggerlong Tonk (VIC), Tommy Shelby (WA).

First reserve: Hard Style Rico (VIC).

Second reserve: Weblec Ace (VIC).

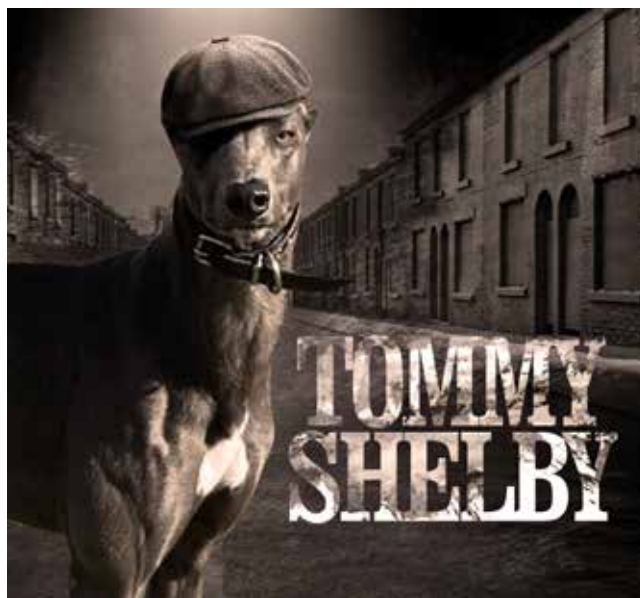
Topgun Stayers 725m field (alphabetical order):

Blazing Cartier (VIC), Classy Ethics (QLD), Here's Tears (VIC), Just Terms (NSW), Sir Truculent (SA), Sunset Bourbski (VIC), Tornado Tears (VIC), True Detective (VIC).

First reserve: Rockstar Beav (VIC).

Second reserve: Keefe (VIC).

Note: Tommy Shelby is owned by the Harders Withers Syndicate, including Steve Withers and Jodie-Louise Harders. Ten per cent of Tommy Shelby's winnings during November 2020 will be donated to Movember, an annual event involving the growing of moustaches during the month of November to raise awareness of men's health issues such as prostate cancer, testicular cancer, and men's suicide.





THE **TAB**

MELBOURNE

Cup
2020

THE WORLD'S GREATEST
GREYHOUND RACE

FRIDAY 27TH
NOVEMBER

LIVE AND FREE ON

WATCHDOG 
RACING

\$1M IN PRIZE MONEY ACROSS THE 12 RACE CARD

METRO *Festival* ^{OF} *Racing*



SandownPark



SANDOWNGREYHOUNDS.COM.AU/MELBOURNECUP

FOR ALL DETAILS AND CONDITIONS OF ENTRY



GRV is proud to present Victorian greyhound racing's first ever Metropolitan Festival of Racing throughout November.

The Metro Festival of Racing brings together fantastic racing across two of Australia's premier racing venues – The Meadows and Sandown Park – with almost \$2 Million in prize money to be shared across five incredible nights of action.

2020 Metro Festival of Racing

Group 1, 2 & 3 Events

Event	Date	Timeslot	Venue	Distance	First prize
G1 Hume Cup Final	Monday 2 November	Night	The Meadows	600m	\$75,000
G3 Silver Bullet				525m	\$25,000
G1 Topgun	Saturday 7 November	Night	The Meadows	525m	\$150,000
G1 Topgun Stayers				725m	\$75,000
G3 Shootout	Thursday 12 November	Night	Sandown Park	515m	\$25,000
G1 Melbourne Cup Heats	Friday 20 November	Night	Sandown Park	515m	\$12,000
G1 Bold Trease Heats				715m	\$8,000
G1 Melbourne Cup Final	Friday 27 November	Night	Sandown Park	515m	\$435,000
G1 Bold Trease Final				715m	\$105,000
G3 Sir John Dillon Memorial				595m	\$25,000

While crowds are currently not allowed on course, comprehensive coverage of the **Metro Festival of Racing** will be accessible via a range of platforms including:

- Four episodes of greyhound racing's popular 'Thrill of the Chase' television program on 7two (starts November 15 at 10am)
- Sky Racing Active & Facebook Live (selected events)
- Watch every Victorian greyhound race LIVE and FREE with The Watchdog app, or by visiting watchdog.grv.org.au
- Radio via RSN Racing & Sport (927 AM) & SEN Track (1593 AM)
- Live Twitter coverage with @WatchdogRacing, @TheMeadowsDogs & @SandownDogs
- Website coverage via grv.org.au, themeadows.org.au & sandowngreyhounds.com.au

Five Freedoms and Greyhound Racing

The Five Freedoms were first introduced in a 1965 UK Government report on livestock husbandry, known as the Bramble Report and, since then, have been adopted world-wide – including here in Australia - as a basic tool for identifying and assessing animal welfare needs.

The Five Freedoms have also been used to help develop a new, more contemporary model known as the Five Domains. Very simply, the Five Domains compliments the Five Freedoms by distinguishing between all the factors that affect an animal's welfare and overall mental state; acknowledging for every physical aspect there may be a linked emotional or subjective experience that also impacts welfare.

Both models recognise animals as sentient beings who can experience a wide range of emotions, just like humans; they consider emotion as equally as important as physical state.

For example, while a premium kibble diet will generally meet the nutritional needs of a racing greyhound, lack of variety in food types for extended periods of time can become repetitive, boring and cause a greyhound to suffer mentally or emotionally. So, a premium dry food diet should be supplemented with bones or put in treat balls or other food puzzles to provide mental stimulation.

The Five Domains model also highlights that simply removing and/or avoiding poor welfare (e.g. hunger) does not lead to good welfare but may only provide at best a neutral state of welfare. This shifts the ideals of the Five Freedoms from reducing or avoiding negative welfare towards a positive welfare state.

Applying the Five Freedoms/Domains to Greyhound Racing

There are some very simple principles to consider when applying the Five Domains or the Five Freedoms to greyhounds in the racing industry.

- When greyhounds are living in a generally positive welfare state, they have the best chance of having a successful racing career, breeding well and adapting well to a pet home.
- Greyhounds in a negative welfare state are less likely to succeed in the racing environment and are more difficult to re-home.
- Greyhounds in a neutral welfare state may learn to chase and race reasonably well; but are unlikely to reach their maximum racing potential and may be more difficult to re-home.

For more information please visit https://greyhoundcare.grv.org.au/health-and-well-being/welfare-care-and-husbandry/#5_freedoms



MONDAY NIGHT 2 NOVEMBER

HUME CUP

SATURDAY NIGHT 7 NOVEMBER

TOPGUN



Group 1 racing at its finest

SEE THE BEST MIDDLE DISTANCE STARS TAKE ON THE 600M

GROUP 1 CITY OF HUME CUP ON MELBOURNE CUP EVE

THEN ON THE SATURDAY NIGHT, WITNESS AUSTRALASIA'S
TOP SPRINTERS AND STAYERS COMPETE FOR GLORY IN THE

GROUP 1 TAB TOPGUN INVITATIONAL EVENTS

Unfortunately we aren't able to welcome patrons on course this year,
but you can catch all of the racing live on Sky Racing and via the Watchdog App.

Gareth Hall & Jason Bonnington will be on course bringing you all the action via our social
media channels, plus on Topgun night there will also be a special Facebook Live broadcast.

The Meadows

METRO
Festival of Racing

 **HUME**
CITY COUNCIL

 **TAB**
Responsible Gambling

GREYHOUND WELFARE AND RE-HOMING REPORT

BY DR GAVIN GOBLE BVSC, GENERAL MANAGER, GREYHOUND WELFARE AND RE-HOMING

VACCINATIONS FOR GREYHOUNDS

The Code of Practice requires all greyhounds to have a current C5 vaccination. Please speak to your veterinarian about when your greyhounds are next due for a vaccination and ensure your Kennel Cough vaccine is up to date. Just a reminder that the vaccination requirements for acceptance into GAP are more specific, so please check with GRV if you are planning to get a vaccination for this purpose. These requirements are also on the GAP page of this magazine.

In addition to recording your greyhound's vaccinations in its Greyhound Record, please also provide GRV with copies of your vaccination certificates for GRV to upload into FastTrack so there is a permanent record. This is particularly important if you are considering, or are already, breeding from your greyhound. These vaccination certificates are required to keep the Pink Card active.

Greyhound retirements

When we talk about retirement, we use the term to mean the greyhound is no longer part of the racing industry. So, retirement does not include breeding, whelping, spelling, recovering from injury, taking a rest, waiting to come on season, winding down in preparation for being a pet, or waiting to go to GAP or a rescue group/shelter. A retired greyhound is one that is no longer part of the industry; that is, either is a pet (with the registered racing owner or a third party) or is no longer alive.

'Retired' for breeding: For several years, greyhounds have been 'retired for breeding' on FastTrack. Because breeding can only occur by a registered breeder, with a female that is registered for breeding (with a valid 'Pink Card'), and the new Kennel Return allows you to tell GRV that the greyhound is being used for breeding, this is no longer a valid retirement and so we will be looking at this functionality.

Retired as a pet: If your greyhound is retired as a pet, including being taken in by a re-homing group for re-homing, the registered owner must inform GRV within 10 business days of retirement so we can update FastTrack. The registered owner must not rely on the new owner or the re-homing group to inform GRV. In these cases it is critical that the correct and complete new owner details are provided to GRV, ideally by both the existing and new owner completing and signing the re-homing form (Notice of Retirement as a Pet - Transfer to New Owner form) and returning it to GRV. Alternatively, notification can be done by the participant through their FastTrack login (retirements function) or provided to GRV directly. GRV as a licensed Microchip Registry cannot allow the dog to be transferred into the new owner's name until the new owner confirms that they have the dog. Once the new owner's details are verified, the retirement is confirmed, and the greyhound's status will change to 'Retired' on FastTrack and move to the owner's 'My Retired Dogs' list. All clubs should have copies of the re-homing forms for participants to pick up, and the forms are also available at <https://greyhoundcare.grv.org.au/rehoming/rehoming-pack/>. Please note that the Code of Practice states that "Greyhounds must not be surrendered to a pound".

Inactive greyhounds

Can you please continue to keep your greyhounds' location and activity (for example spelling, breeding, rearing, education etc) up to date by using the new Kennel Return functionality. GRV is currently conducting another inactive greyhound follow-up, so please respond to phone calls or letters to advise the status and location of your greyhounds that GRV identifies as 'inactive' (i.e. no activity on FastTrack for 6 months or more). Any questions please contact Welfare staff for support on 03 8329 1108.

Hot weather

With summer approaching very quickly, it is time to think about your greyhounds during the hot weather. Greyhounds have an optimal internal body temperature of 38.0 - 39.5°C. According to scientific literature, the air temperature of a greyhound's environment should ideally be 16 - 24°C to maintain their internal temperature without having to use excess energy. Air temperatures outside this zone require greyhounds to use more energy to maintain their internal body temperature. It is therefore vital to maintain the internal temperature of greyhound kennel buildings and transport vehicles within the appropriate temperature zone, and this is particularly important on race days when excess energy expenditure can impact on race performance.

The updated Hot Weather and Transport policies are now in force to protect the welfare of the greyhounds over the summer, although the Transport Policy also has more general (all year round) requirements. For transport in hot weather this means that if the forecasted maximum temperature is 32°C or above at any point in the journey at any time that day, the hot weather requirements apply (i.e. mandatory air-conditioning) regardless of the time of the day of the journey. The updated policy stipulates that the internal trailer temperature must be kept at or below 30°C (but ideally at 16 - 24°C), so the air-conditioning should be started at least 30 minutes prior to loading greyhounds into the trailer and must be kept running during travelling. VicRoads has again confirmed that it is legal to run a generator on the trailer during travelling as long as it is correctly and safely/securely installed and well-maintained. Clubs have been provided

with new posters for the kennel area to support participants with the transport and management of their greyhounds during summer.

On warm and hot days, ensure your greyhounds:

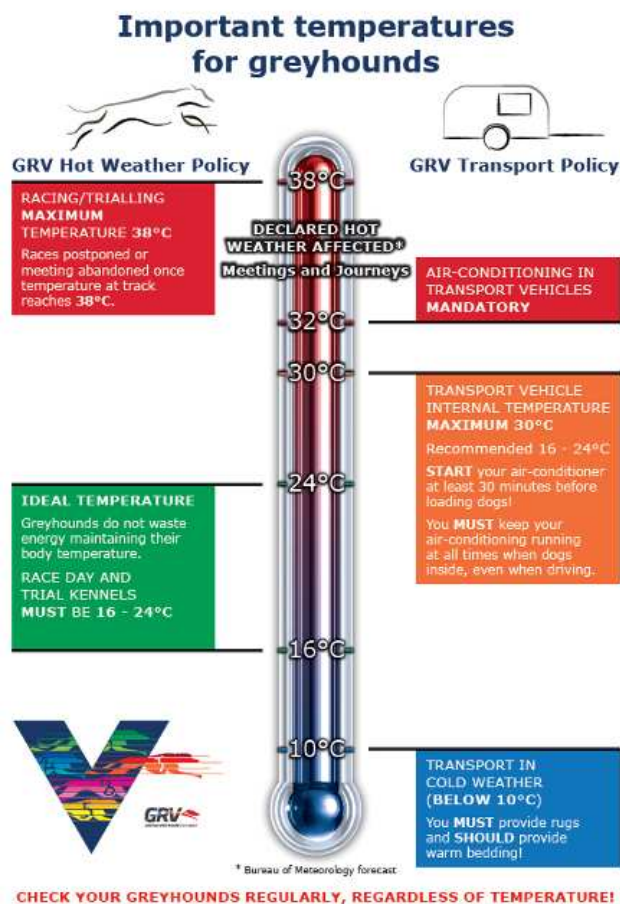
- ✓ have ready access to lots of cool drinking water in non-spillable containers;
- ✓ have access to shade at all times when outside;
- ✓ have good air flow through kennel buildings and/or well insulated buildings;
- ✓ have covered or shaded concrete walkways to prevent burning of pads when walking greyhounds around properties/race tracks;
- ✓ have access to cooling vests for after exercise and racing or only exercised in the coolest parts of the day; **
- ✓ have access to airconditioned transport; and
- ✓ are monitored regularly.

Be aware that when the temperature is 24°C a closed vehicle in the sun can reach up to 35°C in 10 minutes and 50°C in 30 minutes.

For more information, please visit

<https://greyhoundcare.grv.org.au/hot-weather/>.

** Cooling vests should only be used for a maximum of 60 minutes after first being put on; using them for longer can cause the vest to dry out and risk heat stress. They are available at all tracks on hot weather affected meetings.



Fire season is coming – get prepared

With the advent of the beautiful spring weather over the past month, it is time to turn your thoughts to the coming summer. Weather forecasting is predicting a wet late spring into early summer, so it is important to keep on top of vegetation growth around all buildings, tanks and other property assets. Now is the time to get your fire plans in order and avoid leaving things until the last minute. Start getting your property ready:

- Prepare or review your fire plan, including evacuation options; if you choose to take your greyhounds with you, contact your local Municipal Council to find out which of their evacuation centres will allow animals and add the address and details to your plan
- Remove doormats from around the house and kennel areas
- Move combustible outdoor furniture and other items from decks, up against, or under the home or your kennel area
- Move pot plants a few metres from the home or kennel area
- Double check that gas bottles are anchored securely with the relief valves pointing away from any flammable materials
- Ensure grass in surrounding paddocks, yards, alongside slipping tracks etc is no taller than 50mm
- On bigger properties, a clearing of about 10 metres of well-mown grass (no taller than 50mm) around your home and kennel block is advisable

- Walk around your home and remove piles of fine fuels such as leaves, twigs and bark from trees; embers landing in these fine fuels will create spot fires
- Check your gutters to make sure leaves haven't built up – check your home, kennels and other shedding
- Make sure you remove any fuels from around windows and doors; these are the most vulnerable parts of the home and kennel area
- Make sure trees on your property are healthy with no dead limbs and no vegetation underneath them
- Ensure your insurance is sufficient and current
- Prepare a greyhound evacuation kit, including, leads, muzzles, bedding, first aid kit, necessary medications, food and water bowls, 3 days of dry food and bottles of water; keep the kit in a central location so it can be quickly loaded into your car
- If you have transport crates, ensure they are clean, in good working order and easy to access
- Practise your emergency evacuation plan at least once before the hot, dry weather arrives

Visit <https://greyhoundcare.grv.org.au/hot-weather/> for more information and download our emergency planning checklist to help you https://greyhoundcare.grv.org.au/wp-content/uploads/2017/11/Animal_Welfare_Emergency_Planning_Checklist.pdf

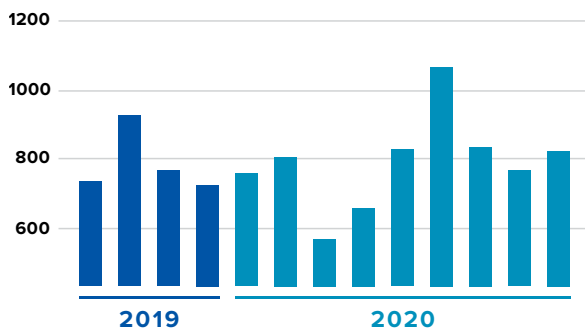
GREYHOUND RACING INTEGRITY UNIT REPORT

SWABBING NUMBERS

Swabs taken 2019 - 2020 financial year
(01/07/2019 – 30/06/2020) = **9767**

Swabs taken 2020 - 2021 financial year = **2414**

MONTHLY SWABS TAKEN



STEWARDS ACTIVITY

OFFENCES AND ACTIVITY	SEPTEMBER 2020
Marring	15
Fail to Chase	47
Satisfactory Trials Cleared	46
Satisfactory Trials Not Cleared	7
Samples (Swabs) Taken	818
Positive Swabs from RASL	6
VRT Positive Swab Cases Heard	4
VRT Appeals Heard	2
VRT Animal Welfare Cases Heard	0
VRT Misconduct Cases Heard	0
VCAT Cases Heard	1

PROSECUTIONS OVERVIEW

Victorian Racing Tribunal

Darren Kee – VRT Hearing 4 September 2020 – GAR 83(2), failed to present the greyhound “Halwes” free of any prohibited substance ‘Flunixin’ for an event The Meadows on 25 January 2020. Mr Kee pleaded ‘Guilty’, The VRT imposed a 3 months suspension fully suspended and a \$1,000 fine. Halwes was disqualified from the event.

Aaron Farley – VRT Hearing 11 September 2020 – GAR 83(2) & GAR 83 (1A), failed to present the greyhound “Dorellie Love” free of any prohibited substance ‘Fexofenadine’ for an event at Sandown on 16 February 2020. Mr Farley pleaded ‘Guilty’, The VRT imposed \$1750 fine with \$500 suspended. Dorellie Love was disqualified from the event.

Marcus Lloyd – VRT Hearing 29 September 2020 – GAR 83(2), failed to present the greyhound “Pumpnickel” free of any prohibited substance ‘Hydrochlorothiazide’ for an event at Ballarat on 19 February 2020. Mr Lloyd pleaded ‘Guilty’, The VRT imposed \$500 fine. Pumpnickel was disqualified from the event.

Dallas Massina – VRT Hearing 30 September 2020 – GAR 83(2), failed to present the greyhound “Kannella” free of any prohibited substance ‘Arsenic’ for an event at Horsham on 3 March 2020. Ms Massina pleaded ‘Guilty’, The VRT imposed 6 mth suspension with 4 mths suspended and a \$500 fine. Kannella was disqualified from the event.

Shane Jack – VRT Appeal 11 September 2020 – (GAR) 69 (A)(1). The greyhound “Evi Bale” was charged with failing to pursue the lure with due commitment at Sale on 6 September 2020. Mr Shane Jack pleaded ‘Not Guilty’. The VRT dismissed the appeal.

Gary Lane – VRT Appeal 17 & 21 September 2020 – (GAR) 71. The greyhound “Forty Free Beans” was charged with fail to perform to the satisfaction of the Stewards following Race 11 at Horsham on 13 September 2020. Mr Gary Lane pleaded ‘Not Guilty’. The VRT dismissed the appeal.

Donna Dean – VRT Hearing 9 April 2020 – GAR 83(2) - failed to present the greyhound “Polo Pete” free of any prohibited substance (Arsenic) for an event at Cranbourne on 10 April 2019. Mrs. Dean pleaded ‘Not Guilty’. The VRT imposed 6 months suspension with 4 months suspended for 12 months, and a \$500 fine. Mrs Dean appealed the penalty to VCAT. On 10 September 2020, the matter was listed for hearing and the decision was reserved. Awaiting outcome.

WATCHDOG **GRV**

Have you switched yet?

Watchdog Blackbook

UPCOMING GRV VIC BRED SERIES

GRV VIC BRED Series races are designed to promote and reward Victorian Bred Greyhounds. Each series is designed to give an equal opportunity to a variety of greyhounds, of similar grade and experience, a chance to compete for above average prizemoney. GRV VIC BRED

Series are open to Victorian Bred Greyhounds and all provincial finals carry a VICGREYS Bonus.

Listed here are when GRV VIC BRED Series commence during November and December 2020.

GRV VIC BRED Maiden Series

Sun, 15 Nov	Twilight	SAP	GRV VIC BRED Series - Maiden Heat 515
Sun, 6 Dec	Day	HVL	GRV VIC BRED Series - Maiden Heat 350
Tue, 15 Dec	Night	WGL	GRV VIC BRED Series - Maiden Heat 460
Wed, 30 Dec	Night	WBL	GRV VIC BRED Series - Maiden Heat 450

GRV VIC BRED Mixed 6/7 Series

Fri, 30 Oct	Night	WGL	GRV VIC BRED Series - Mixed 6/7 Heat 460
Sun, 13 Dec	Twilight	SLE	GRV VIC BRED Series - Mixed 6/7 Heat 440

GRV VIC BRED Restricted Win Series

Mon, 16 Nov	Night	SHP	GRV VIC BRED Series - Restricted Win Heat 450 (1 - 4 Wins)
Tue, 1 Dec	Twilight	HOR	GRV VIC BRED Series - Restricted Win Heat 410(1 - 4 Wins)

GRV VIC BRED Grade 5 Series

Fri, 6 Nov	Night	GEL	GRV VIC BRED Series - Grade 5 Heat 460
Mon, 9 Nov	Night	SHP	GRV VIC BRED Series - Grade 5 Heat 450
Thu, 12 Nov	Night	WBL	GRV VIC BRED Series - Grade 5 Heat 450
Sun, 29 Nov	Night	HVL	GRV VIC BRED Series - Grade 5 Heat 350
Wed, 2 Dec	Night	CRN	GRV VIC BRED Series - Grade 5 Heat 520
Tue, 8 Dec	Twilight	HOR	GRV VIC BRED Series - Grade 5 Heat 485
Wed, 23 Dec	Night	BAL	GRV VIC BRED Series - Grade 5 Heat 450

GRV VIC BRED Distance Series

Fri, 6 Nov	Night	GEL	GRV VIC BRED Series - Restricted Win Heat 680 (0-6 Wins)(No City Wins)
Wed, 11 Nov	Night	BAL	GRV VIC BRED Series - Special Event Heat 660 (Less than \$25,000)
Fri, 20 Nov	Night	BEN	GRV VIC BRED Series - Special Event Heat 660 (Less than \$25,000)
Wed, 16 Dec	Night	CRN	GRV VIC BRED Series - Restricted Win Heat 699 (0-6 Wins)(No City Wins)



To assist participants with re-homing their greyhounds, spaces in the pre-entry assessment sessions are booked through Racing Services during office hours on **03 8329 1100** or by emailing gapbooking@grv.org.au.

All sessions for the next 2 months are listed on this page, with later dates released each month.

To be eligible for a pre-entry assessment your greyhound must:

- have a current C5 vaccination as per the specific GAP VACCINATION REQUIREMENTS described on this page given at least 10 days before the pre-entry assessment; and
- not have been trained, trialled or raced for at least one month (preferably two months) prior to the testing day ("wind-down period"). This will increase the likelihood of your greyhound passing the temperament test. The 'Racing to Retirement' information booklet is available through Racing Services or at: greyhoundcare.grv.org.au/retirement-from-racing.

Participants may be asked to provide a good quality, well fitted wire muzzle when entering a greyhound into GAP. Note: there is no fee for greyhounds being entered into GAP.

The principles of the GRV Hot Weather Policy also apply to days when greyhounds are accepted into GAP. For days when the temperature is forecast to be 32 degrees or above, entry sessions may be subject to a time change. For days when the temperature is forecast to be 38 degrees or above, entry sessions will be cancelled. GRV will notify participants by phone as soon as possible for all session changes and cancellations. Wherever possible, GRV will endeavour to replace cancelled sessions with new sessions in the local area.

TESTING DATES

LOCATION	TESTING DAY	TIME
Ballarat	Wednesday, 4 November 2020	9.30am to 1.00pm
GAP/Seymour	Monday, 9 November 2020	9.00am to 12.00pm
Warrnambool	Wednesday, 11 November 2020	8.30am to 12.00pm
Sandown	Monday, 16 November 2020	10.00am to 1.00pm
Meadows	Tuesday, 17 November 2020	9.30am to 12.30pm
Shepparton	Monday, 23 November 2020	9.30am to 12.30pm
GAP/Seymour	Wednesday, 25 November 2020	9.00am to 12.00pm
GAP/Seymour	Monday, 30 November 2020	9.00am to 12.00pm
Cranbourne	Tuesday, 1 December 2020	10.00am to 1.00pm

Pre-entry Assessment Booking number:
03 8329 1100

Pre-entry Assessment email:
gapbooking@grv.org.au

GAP VACCINATION REQUIREMENTS

Your greyhound must have had the following vaccinations:

- Parvovirus, Distemper and Hepatitis (C3) within the last 2½ years (or within the last 1 year if the last C3 was given earlier than 12 months of age); and
- Kennel Cough (both Bordetella and Parainfluenza) within the last 6 months where the Bordetella component is given as an intra-nasal or oral vaccine.

The simplest method to achieve this is an injectable C3 vaccine plus the standard intra-nasal Kennel Cough vaccine.

Note the GAP vaccination requirements are more specific than a standard injectable C5 vaccination given annually. If you or your veterinarian have any questions on these requirements, please contact GRV.



LOCATION	TESTING DAY	TIME
Sandown	Monday, 7 December 2020	10.00am to 1.00pm
Geelong	Thursday, 10 December 2020	10.00am to 1.00pm
Sale	Monday, 14 December 2020	8.30am to 12.30pm
GAP/Seymour	Wednesday, 16 December 2020	9.00am to 12.00pm
Sandown	Monday, 11 January 2021	10.00am to 1.00pm
Cranbourne	Tuesday, 12 January 2021	10.00am to 1.00pm
Shepparton	Monday, 18 January 2021	9.30am to 12.30pm
Ballarat	Wednesday, 20 January 2021	10.00am to 1.00pm
Seymour	Monday, 25 January 2021	9.00am to 12.00pm
Geelong	Thursday, 28 January 2021	10.00am to 1.00pm

SESSIONS MARKED IN GREY ARE **BOOKED OUT**

RACING CALENDAR

CLUBS

BAL - Ballarat

BEN - Bendigo

CRN - Cranbourne

GEL - Geelong

HOR - Horsham

HVL - Healesville

MEA - Meadows

SAN - Sandown Park

SHP - Shepparton

SLE - Sale

TRA - Traralgon

WGL - Warragul

WBL - Warrnambool

MEP - Meadows (Provincial)

SAP - Sandown Park (Provincial)

DATE	TIMESLOT	TRACK	TITLE OF EVENT	DISTANCE	WINNER
Sun, 1 Nov	Day	HVL	Grade 5 No Penalty 300 (275+ Ranking)	300	1900
			S/E Veteran 350 (250+ Ranking)	350	1650
			Maiden Final 300 (VICGREYS)	300	1650
			Restricted Win 350 (1 - 3 Wins)(275+ Ranking)	350	1650
	Twilight	SAP	Grade 5 Heat 595 (Final SAN 5/11)	595	1900
			Restricted Win 595 (0 - 2 Wins)(225+ Ranking)	595	1900
			Restricted Win 515 (1 - 3 Wins)(225+ Ranking)	515	1650
			Grade 5 No Penalty 515 (225+ Ranking)	515	1650
		SLE	GRV VIC BRED Series - Restricted Win Final 650 (0 - 6 Wins)(Vic Bred Only) (VICGREYS)	650	5300
			Mixed 6/7 Final 440 (VICGREYS)	440	1900
Mon, 2 Nov	Day	CRN	Grade 5 Heat 440	440	1650
			Restricted Win 440 (1 - 3 Wins)(250+ Ranking)	440	1650
	Twilight	BAL	Provincial Non-Penalty - Tier 3 (Half Stakes)		
		WBL	Rank Limit (Half Stakes)(250+ Ranking)		
	Night	MEA	Hume Cup S/E Group 1 600	600	75000
			Grade 5 Heat 525	525	5280
Tue, 3 Nov	Twilight	HOR	RSN Silver Bullet S/E Group 3 525	525	25000
			Provincial Non-Penalty - Tier 3 (Half Stakes)		
			Restricted Win Final 485 (3 - 6 Wins)	485	1900
			Grade 5 No Penalty 410 (250+ Ranking)	410	1650
	Night	WGL	Restricted Win 485 (1 - 3 Wins)(250+ Ranking)	485	1650
			Mixed 6/7 Heat 410	410	1650
			Grade 5 680	680	1900
			Grade 5 No Penalty 460 (275+ Ranking)	460	1650
			S/E Veteran 400	400	1650
			Restricted Win Heat 400 (3 - 6 Wins)	400	1650
Wed, 4 Nov	Day	MEP	Restricted Win 600 (0 - 2 Wins)(225+ Ranking)	600	1900
			Grade 5 No Penalty 600 (225+ Ranking)	600	1900
			Restricted Win 525 (1 - 3 Wins)(225+ Ranking)	525	1650
			Restricted Win Heat 525 (3 - 6 Wins)(Final MEA 14/11)	525	1650
	Night	BEN	Provincial Non-Penalty - Tier 3 (Half Stakes)		
		BAL	Grade 5 No Penalty 390 (275+ Ranking)	390	1650
			Mixed 6/7 Heat 390	390	1650
			Restricted Win 450 (1 - 3 Wins)(275+ Ranking)	450	1650
			Grade 5 Final 390	390	1650
		CRN	Restricted Win Final 311 (3 - 6 Wins)(VICGREYS)	311	1900
Thu, 5 Nov	Day	SHP	Mixed 6/7 Heat 311	311	1650
			Restricted Win 520 (1 - 3 Wins)(275+ Ranking)	520	1650
	Night	WGL	Grade 5 No Penalty 311 (275+ Ranking)	311	1650
			Provincial Non-Penalty - Tier 3 (Full Stakes)		
			Provincial Non-Penalty - Tier 3 (Half Stakes)		
		SAN	Grade 5 Final 595 (Final SAN 5/11)	595	7480
			Special Event 595	595	7480
			Special Event 715	715	7480
			Warragul to Sandown Grade 5 Final 515 (No City Wins)(Final San 5/11)	515	6540
		WBL	Ready 2 Race Championship Special Event 515 (Top 8 Greyhounds with Highest Prizemoney since 2019 Auction)	515	12000
			GDR Restricted Win 650 (0 - 4 Wins)	650	3300
			Grade 5 Final 390 (VICGREYS)	390	1900
Fri, 6 Nov	Twilight	BEN	Restricted Win 390 (1 - 3 Wins)(250+ Ranking)	390	1650
			Grade 5 No Penalty 450 (250+ Ranking)	450	1650
			Maiden Heat 450	450	1405
			Provincial Non-Penalty - Tier 3 (Half Stakes)		
	Night	GEL	Grade 5 No Penalty 425 (275+ Ranking)	425	1650
			Bendigo to The Meadows Grade 5 Heat 500 (Bitches Only)(Maidens Ineligible)(No City Wins)(Final MEA 14/11)	500	1650
			Restricted Win 500 (1 - 3 Wins)(275+ Ranking)	500	1650
			Maiden Final 425 (VICGREYS)	425	1650
		WGL	Restricted Win Heat 425 (3 - 6 Wins)	425	1650
			GRV VIC BRED Distance Series - Restricted Win Heat 680 (0 - 6 Wins)(No City Wins) (Vic Bred Only)(VICGREYS)	680	1900
Sat, 7 Nov	Twilight	BEN	GRV VIC Bred Series Grade 5 Heat 460 (Vic Bred Only)(VICGREYS)	460	1650
			Grade 5 No Penalty 400 (275+ Ranking)	400	1650
			Restricted Win 460 (1 - 3 Wins)(275+ Ranking)	460	1650
			GRV VIC BRED Series - Mixed 6/7 Final 460 (Vic Bred Only)(VICGREYS)	460	4250
	Night	GEL	Grade 5 No Penalty 400 (275+ Ranking)	400	1650
			Restricted Win 460 (1 - 3 Wins)(275+ Ranking)	460	1650
			GRV VIC BRED Series - Restricted Win Heat 680 (0 - 6 Wins)(No City Wins) (Vic Bred Only)(VICGREYS)	680	1900
			GRV VIC Bred Series Grade 5 Heat 460 (Vic Bred Only)(VICGREYS)	460	1650
		WGL	Grade 5 No Penalty 400 (275+ Ranking)	400	1650
			Restricted Win 460 (1 - 3 Wins)(275+ Ranking)	460	1650

VICGREY

To be eligible a greyhound needs to be whelped in Victoria i.e. its earbrand begins with a "V".

VICBRED

To be eligible a greyhound needs to be whelped in Victoria i.e. its earbrand begins with a "V".

DISTANCE (570+)

GRV VIC BRED SERIES

TIER 3

VETERAN RACE

FEMALE RACE

DATE	TIMESLOT	TRACK	TITLE OF EVENT	DISTANCE	WINNER
Sat, 7 Nov	Morning	BEN	Rank Limit (Half Stakes)(200+ Ranking)		
			Grade 5 No Penalty 410 (250+ Ranking)	410	1650
	Twilight	HOR	Restricted Win 485 (1 - 3 Wins)(250+ Ranking)	485	1650
			Grade 5 410 (Bitches Only)	410	1650
			GRV VIC BRED Series - Grade 5 Final 525 (Vic Bred Only)	525	9060
	Night	MEA	Topgun Stayers S/E Group 1 725 (By Invitation)	725	75000
			Topgun S/E Group 1 525 (By Invitation)	525	150000
Sun, 8 Nov	Day	HVL	Healesville Puppy Championship S/E Heat 350 (Whelped on/after 1 Nov 2018)	350	825
			S/E Veteran 350 (250+ Ranking)	350	825
	Twilight	SAP	Restricted Win 595 (0 - 2 Wins)(225+ Ranking)	595	1900
			Grade 5 No Penalty 595 (225+ Ranking)	595	1900
			Grade 5 No Penalty 515 (225+ Ranking)	515	1650
		SLE	Restricted Win 515 (1 - 3 Wins)(225+ Ranking)	515	1650
			Grade 5 Final 440	440	1900
			Grade 5 No Penalty 440 (250+ Ranking)	440	1650
	Night	SLE	Restricted Win Heat 440 (3 - 6 Wins)	440	1650
			Restricted Win 440 (1 - 3 Wins)(250+ Ranking)	440	1650
Mon, 9 Nov	Day	CRN	Provincial Non-Penalty - Tier 3 (Half Stakes)		
	Twilight	BAL	Provincial Non-Penalty - Tier 3 (Half Stakes)		
		WGL	Rank Limit (Half Stakes)(250+ Ranking)		
	Night	SHP	GDR Special Event 650	650	3585
			Grade 5 No Penalty 385 (275+ Ranking)	385	1650
			Restricted Win 450 (1 - 3 Wins)(275+ Ranking)	450	1650
			GRV VIC Bred Series Grade 5 Heat 450 (Vic Bred Only)(VICGREYS)	450	1650
			S/E Veteran 385	385	1650
Tue, 10 Nov	Day	HVL	Provincial Non-Penalty - Tier 3 (Half Stakes)		
	Twilight	GEL	Provincial Non-Penalty - Tier 3 (Half Stakes)		
		HOR	Mixed 6/7 Final 410	410	1900
			Restricted Win 485 (1 - 3 Wins)(250+ Ranking)	485	1650
			S/E Veteran 410 (200+ Ranking)	410	1650
			Grade 5 No Penalty 410 (250+ Ranking)	410	1650
			Grade 5 Heat 485	485	1650
	Night	WGL	Restricted Win Final 400 (3 - 6 Wins)	400	1900
			Grade 5 Heat 400	400	1650
			Restricted Win 400 (1 - 3 Wins)(275+ Ranking)	400	1650
Wed, 11 Nov	Day	MEP	Restricted Win 600 (0 - 2 Wins)(225+ Ranking)	600	1900
			Novice Grade 7 725	725	1900
			Mixed 6/7 Heat 525 (Final MEA 21/11)	525	1650
			Grade 5 No Penalty 525 (225+ Ranking)	525	1650
	Twilight	BEN	Provincial Non-Penalty - Tier 3 (Half Stakes)		
	Night	BAL	GRV VIC BRED Distance Series - S/E Heat 660 (Less Than \$25000)(Vic Bred Only)	660	2185
			Mixed 6/7 Final 390	390	1900
			Restricted Win 450 (1 - 3 Wins)(275+ Ranking)	450	1650
		CRN	Grade 5 No Penalty 390 (275+ Ranking)	390	1650
			Maiden Heat 450	450	1405
			Mixed 6/7 Final 311	311	1900
Thu, 12 Nov	Day	SHP	Provincial Non-Penalty - Tier 3 (Half Stakes)		
	Twilight	WGL	Provincial Non-Penalty - Tier 3 (Half Stakes)		
	Night	SAN	Melbourne Cup Prelude Series 3 - Special Event 515	515	6540
			Shootout - S/E Group 3 515 (Visit sandowngreyhounds.com.au for full Terms & Conditions)	515	25000
		WBL	GRV Vic Bred Series - Grade 5 Heat 450 (Vic Bred Only)(VICGREYS)	450	1650
			Sam Barbie Grant Memorial Restricted Win Heat 450 (Dogs Only)(0 - 3 Wins)(No City Wins)	450	1650
			Grade 5 No Penalty 390 (250+ Ranking)	390	1650
Fri, 13 Nov	Day	HVL	Provincial Non-Penalty - Tier 3 (Half Stakes)		
	Twilight	BEN	Restricted Win Final 425 (3 - 6 Wins)	425	1900
			Grade 5 No Penalty 425 (275+ Ranking)	425	1650
			Restricted Win 500 (1 - 3 Wins)(275+ Ranking)	500	1650
	Night	GEL	Mixed 6/7 Heat 425	425	1650
			GRV VIC BRED Distance Series - Restricted Win Final 680 (0 - 6 Wins)(No City Wins)(Vic Bred Only)(VICGREYS)	680	5300
			GRV VIC Bred Series Grade 5 Final 460 (Vic Bred Only)(VICGREYS)	460	3300
			S/E Veteran 460	460	1650
		SLE	Grade 5 No Penalty 460 (275+ Ranking)	460	1650
			Mixed 6/7 Heat 460	460	1650
			Restricted Win 400 (1 - 3 Wins)(275+ Ranking)	400	1650
	Night	SLE	Restricted Win 440 (1 - 3 Wins)(250+ Ranking)	440	1650
			Grade 5 No Penalty 440 (250+ Ranking)	440	1650

NOMINATIONS - (03) 8329 1111

Mon to Fri: 7:30am - 12noon
Online Nominations - 24 hours a day, 7 days a week

SCRATCHINGS - (03) 8329 1100

Weekdays: 7:30am - 4:30pm
Sat/Sun: 7:30am - 9:00am & 3:00pm - 4:30pm

DATE	TIMESLOT	TRACK	TITLE OF EVENT	DISTANCE	WINNER
Sat, 14 Nov	Morning	CRN	Presidents Cup Mixed 4/5 699	699	5400
			Casey Sprint Special Event 311	311	5250
	Twilight	SHP	Rank Limit (Half Stakes)(200+ Ranking)		
			Special Event 600	600	7480
	Night	MEA	Restricted Win Final 525 (3 - 6 Wins)(Final MEA 14/11)	525	6540
Sun, 15 Nov	Day	HVL	Bendigo to The Meadows Grade 5 Final 525 (Bitches Only)(Maidens Ineligible)(No City Wins)(Final MEA 14/11)	525	6540
			Healesville Puppy Championship S/E Final 350 (Whelped on/after 1 Nov 2018)	350	5250
			Restricted Win 300 (1 - 3 Wins)(275+ Ranking)	300	1650
	Twilight	SAP	Grade 5 No Penalty 350 (275+ Ranking)	350	1650
			GDR - Grade 5 715	715	3300
			Grade 5 No Penalty 595 (225+ Ranking)	595	1900
			Restricted Win 595 (0 - 2 Wins)(225+ Ranking)	595	1900
			Restricted Win 515 (1 - 3 Wins)(225+ Ranking)	515	1650
			Grade 5 No Penalty 515 (225+ Ranking)	515	1650
			GRV VIC BRED Series - Maiden Heat 515 (Vic Bred Only)	515	1405
		SLE	Restricted Win Final 440 (3 - 6 Wins)	440	1900
			Grade 5 No Penalty 440 (250+ Ranking)	440	1650
			Maiden Heat 440	440	1405
Mon, 16 Nov	Day	WBL	Rank Limit (Half Stakes)(250+ Ranking)		
	Twilight	CRN	Provincial Non-Penalty - Tier 3 (Half Stakes)		
		WGL	Provincial Half Stakes		
	Night	SHP	GRV VIC Bred Series Grade 5 Final 450 (Vic Bred Only)(VICGREYS)	450	3300
			GRV VIC BRED Series - Restricted Win Heat 450 (1 - 4 Wins)(Vic Bred Only)(VICGREYS)	450	1650
			Restricted Win 385 (1 - 3 Wins)(275+ Ranking)	385	1650
			S/E Veteran 385 (250+ Ranking)	385	1650
			Grade 5 No Penalty 450 (275+ Ranking)	450	1650
Tue, 17 Nov	Day	HVL	S/E Veteran 300 (250+ Ranking)	300	825
	Twilight	GEL	Restricted Win Heat 460 (1 - 4 Wins)(10+ Starts)(No City Wins)(250+ Ranking)	460	825
			Grade 5 Heat 460 (10+ Starts)(No City Wins)(250+ Ranking)	460	825
			S/E Heat 520 (10+ Starts)(No City Wins)(250+ Ranking)	520	825
		HOR	Grade 5 Final 485	485	1900
			Grade 5 No Penalty 485 (250+ Ranking)	485	1650
			Restricted Win 410 (1 - 3 Wins)(250+ Ranking)	410	1650
			Maiden Heat 410	410	1405
	Night	WGL	Grade 5 Final 400	400	1900
			Grade 5 No Penalty 460 (275+ Ranking)	460	1650
			Maiden Heat 400	400	1405
Wed, 18 Nov	Day	MEP	Restricted Win 600 (0 - 2 Wins)(225+ Ranking)	600	1900
			Grade 5 Heat 600 (Final MEA 28/11)	600	1900
			Grade 5 No Penalty 525 (225+ Ranking)	525	1650
			Restricted Win 525 (1 - 3 Wins)(225+ Ranking)	525	1650
	Twilight	BEN	Provincial Non-Penalty - Tier 3 (Half Stakes)		
	Night	BAL	GRV VIC BRED Distance Series - S/E Final 660 (Less Than \$25000)(Vic Bred Only)	660	5300
			Restricted Win 390 (1 - 3 Wins)(275+ Ranking)	390	1650
			Grade 5 No Penalty 450 (275+ Ranking)	450	1650
			Maiden Final 450	450	1650
		CRN	Restricted Win Heat 450 (3 - 6 Wins)	450	1650
			GDR Restricted Win 699 (0 - 4 Wins)	699	3300
			Grade 5 Final 520	520	1900
			Provincial Plate S/E Heat 520 (Maidens Ineligible)(No City Wins)(Final SAN 27/11)	520	1900
			Restricted Win 311 (1 - 3 Wins)(275+ Ranking)	311	1650
			S/E Veteran 311	311	1650
			Maiden Heat 311	311	1405
Thu, 19 Nov	Day	SHP	Provincial Non-Penalty - Tier 3 (Half Stakes)		
	Twilight	WGL	Provincial Non-Penalty - Tier 3 (Half Stakes)		
	Night	GEL	Mixed 6/7 Final 400	400	1900
			Provincial Plate S/E Heat 520 (Maidens Ineligible)(No City Wins)(Final SAN 27/11)	520	1900
			Restricted Win Heat 400 (3 - 6 Wins)(VICGREYS)	400	1650
			Grade 5 No Penalty 400 (275+ Ranking)	400	1650
			Restricted Win 460 (1 - 3 Wins)(275+ Ranking)	460	1650
		WBL	GRV Vic Bred Series - Grade 5 Final 450 (Vic Bred Only)(VICGREYS)	450	3300
			Sam Barbie Grant Memorial Restricted Win Final 450 (Dogs Only)(0 - 3 Wins)(No City Wins)	450	3250
			Grade 5 650	650	1900
			Grade 5 No Penalty 450 (250+ Ranking)	450	1650
			Restricted Win 390 (1 - 3 Wins)(250+ Ranking)	390	1650
Fri, 20 Nov	Day	HVL	Provincial Non-Penalty - Tier 3 (Half Stakes)		
	Twilight	BEN	GRV VIC BRED Distance Series - S/E Heat 660 (Less Than \$25000)(Vic Bred Only)(VICGREYS)	660	2185
			Provincial Plate S/E Heat 500 (Maidens Ineligible)(No City Wins)(Final SAN 27/11)	500	1900
			Mixed 6/7 Final 425	425	1900
			Restricted Win 425 (1 - 3 Wins)(275+ Ranking)	425	1650
	Night	SAN	Bold Trease S/E Heat 715	715	8000
			TAB Melbourne Cup - S/E Heat 515 (Visit sandowngreyhounds.com.au for full Terms & Conditions)	515	12000
		WGL	Grade 5 No Penalty 400 (275+ Ranking)	400	1650
			Restricted Win 460 (1 - 3 Wins)(275+ Ranking)	460	1650

DATE	TIMESLOT	TRACK	TITLE OF EVENT	DISTANCE	WINNER
Sat, 21 Nov	Morning	GEL	S/E Final 520 (10+ Starts)(No City Wins)(250+ Ranking)	520	2400
			Grade 5 Final 460 (10+ Starts)(No City Wins)(250+ Ranking)	460	1900
			Restricted Win Final 460 (1 - 4 Wins)(10+ Starts)(No City Wins)(250+ Ranking)	460	1900
	Twilight	HOR	Grade 5 485 (Bitches Only)	485	1650
			Grade 5 No Penalty 410 (250+ Ranking)	410	1650
			S/E Veteran 410 (200+ Ranking)	410	1650
			Restricted Win 485 (1 - 3 Wins)(250+ Ranking)	485	1650
			Mixed 6/7 Final 525 (Final MEA 21/11)	525	6540
	Night	MEA			
Sun, 22 Nov	Day	HVL	Mixed 6/7 Heat 350	350	825
			S/E Veteran 350 (250+ Ranking)	350	825
	Twilight	SAP	GRV VIC BRED Series - Maiden Semi Final 515 (Vic Bred Only)	515	5000
			Grade 5 No Penalty 595 (225+ Ranking)	595	1900
			Restricted Win 595 (0 - 2 Wins)(225+ Ranking)	595	1900
			Grade 5 No Penalty 515 (225+ Ranking)	515	1650
			Super VICGREYS Series - Restricted Win Heat 515 (1 - 4 Wins)(Vic Bred Only)	515	1405
		SLE	Provincial Plate S/E Heat 520 (Maidens Ineligible)(No City Wins)(Final SAN 27/11)	520	1900
			Maiden Final 440	440	1650
			Mixed 6/7 Heat 440	440	1650
			Restricted Win 520 (1 - 3 Wins)(250+ Ranking)	520	1650
			Grade 5 No Penalty 440 (250+ Ranking)	440	1650
Mon, 23 Nov	Day	WBL	Rank Limit (Half Stakes)(250+ Ranking)		
	Twilight	BAL	Provincial Non-Penalty - Tier 3 (Half Stakes)		
		CRN	Provincial Non-Penalty - Tier 3 (Half Stakes)		
	Night	SHP	GRV VIC BRED Series - Restricted Win Final 450 (1 - 4 Wins)(Vic Bred Only)(VICGREYS)	450	4250
			Grade 5 No Penalty 450 (275+ Ranking)	450	1650
			Restricted Win 385 (1 - 3 Wins)(275+ Ranking)	385	1650
			Grade 5 Heat 385	385	1650
Tue, 24 Nov	Day	HVL	Provincial Non-Penalty - Tier 3 (Half Stakes)		
	Twilight	GEL	Provincial Non-Penalty - Tier 3 (Half Stakes)		
		HOR	Maiden Final 410	410	1650
			Restricted Win 485 (1 - 3 Wins)(250+ Ranking)	485	1650
			Grade 5 No Penalty 410 (250+ Ranking)	410	1650
			Restricted Win Heat 410 (3 - 6 Wins)	410	1650
	Night	WGL	GDR Restricted Win 680 (0 - 4 Wins)	680	3300
			Restricted Win Heat 460 (3 - 6 Wins)	460	1650
			Maiden Final 400	400	1650
			Grade 5 No Penalty 400 (275+ Ranking)	400	1650
Wed, 25 Nov	Day	MEP	Grade 5 No Penalty 600 (225+ Ranking)	600	1900
			Restricted Win 600 (0 - 2 Wins)(225+ Ranking)	600	1900
			Grade 5 No Penalty 525 (225+ Ranking)	525	1650
			Restricted Win 525 (1 - 3 Wins)(225+ Ranking)	525	1650
			Maiden Heat 525 (Final MEA 5/12)	525	1405
	Twilight	BEN	Provincial Non-Penalty - Tier 3 (Half Stakes)		
	Night	BAL	GDR Special Event 660	660	3585
			Restricted Win Final 450 (3 - 6 Wins)	450	1900
			Mixed 6/7 Heat 450	450	1650
			S/E Veteran 390	390	1650
			Restricted Win 390 (1 - 3 Wins)(275+ Ranking)	390	1650
		CRN	Grade 5 No Penalty 450 (275+ Ranking)	450	1650
			Restricted Win Heat 520 (3 - 6 Wins)	520	1650
			Grade 5 No Penalty 311 (275+ Ranking)	311	1650
			Maiden Final 311	311	1650
Thu, 26 Nov	Day	SHP	Provincial Non-Penalty - Tier 3 (Half Stakes)		
	Twilight	WGL	Provincial Non-Penalty - Tier 3 (Half Stakes)		
	Night	GEL	Restricted Win Final 400 (3 - 6 Wins)(VICGREYS)	400	1900
			Dual Distance Grade 5 Heat 460 (Dual Distance. Must be Grade 5 over 460m and 520m)	460	1650
			Restricted Win 400 (1 - 3 Wins)(275+ Ranking)	400	1650
			Grade 5 No Penalty 460 (275+ Ranking)	460	1650
		WBL	Grade 5 No Penalty 390 (250+ Ranking)	390	1650
			Restricted Win 450 (1 - 3 Wins)(250+ Ranking)	450	1650
Fri, 27 Nov	Day	HVL	Provincial Non-Penalty - Tier 3 (Half Stakes)		
	Twilight	BEN	GRV VIC BRED Distance Series - S/E Final 660 (Less Than \$25000)(Vic Bred Only)(VICGREYS)	660	5300
			S/E Veteran 425 (250+ Ranking)	425	1650
			Grade 5 No Penalty 500 (275+ Ranking)	500	1650
			Maiden Heat 425	425	1405
	Night	SAN	TAB Melbourne Cup - S/E Group 1 515 (Visit sandowngreyhounds.com.au for full Terms & Conditions)	515	435000
			Cup Night Sprint Group Listed 515	515	25000
			Provincial Plate S/E Final 515 (Maidens Ineligible)(No City Wins)(Final SAN 27/11)	515	25000
			Sir John Dillon Memorial S/E Group 3 595	595	25000
			Cup Night Stayers Special Event 715	715	15000
			GRV VIC BRED Series - Maiden Final 515 (Vic Bred Only)	515	15000
			Bold Trease S/E Group 1 715	715	105000
			Super VICGREYS Series - Restricted Win Final 515 (1 - 4 Wins)(Vic Bred Only)	515	10000
		SLE	Restricted Win 440 (1 - 3 Wins)(250+ Ranking)	440	1650
			Grade 5 No Penalty 440 (250+ Ranking)	440	1650
Sat, 28 Nov	Morning	BAL	Provincial Non-Penalty - Tier 3 (Half Stakes)		
	Twilight	GEL	Restricted Win 460 (1 - 3 Wins)(275+ Ranking)	460	1650
			Grade 5 400 (Bitches Only)	400	1650
			Grade 5 No Penalty 400 (275+ Ranking)	400	1650
	Night	MEA	Grade 5 Final 600 (Final MEA 28/11)	600	7480
			Grade 5 Heat 725	725	6030

DATE	TIMESLOT	TRACK	TITLE OF EVENT	DISTANCE	WINNER
Sun, 29 Nov	Day	HVL	Mixed 6/7 Final 350	350	1900
			Restricted Win 300 (1 - 3 Wins)(275+ Ranking)	300	1650
			Grade 5 No Penalty 300 (275+ Ranking)	300	1650
			GRV Vic Bred Series Grade 5 Heat 350 (Vic Bred Only)	350	1405
	Twilight	SAP	Grade 5 No Penalty 595 (225+ Ranking)	595	1900
			Mixed 6/7 Heat 595 (Final SAN 3/12)	595	1900
			Restricted Win 515 (1 - 3 Wins)(225+ Ranking)	515	1650
			Grade 5 No Penalty 515 (225+ Ranking)	515	1650
		SLE	Sale Cup Prelude Special Event 650	650	2185
			Mixed 6/7 Final 440	440	1900
			Restricted Win 520 (1 - 3 Wins)(250+ Ranking)	520	1650
			Grade 5 No Penalty 440 (250+ Ranking)	440	1650
Mon, 30 Nov	Day	WBL	Rank Limit (Half Stakes)(250+ Ranking)		
	Twilight	BAL	Provincial Non-Penalty - Tier 3 (Half Stakes)		
		CRN	Provincial Non-Penalty - Tier 3 (Half Stakes)		
	Night	SHP	Grade 5 Final 385	385	1900
			S/E Veteran 450 (250+ Ranking)	450	1650
Tue, 1 Dec	Day	HVL	S/E Veteran 300 (250+ Ranking)	300	825
		GEL	Provincial Non-Penalty - Tier 3 (Half Stakes)		
	Twilight	HOR	Restricted Win Final 410 (3 - 6 Wins)	410	1900
			GRV VIC BRED Series - Restricted Win Heat 410 (1 - 4 Wins)(Vic Bred Only)(VICGREYS)	410	1650
			Grade 5 No Penalty 485 (250+ Ranking)	485	1650
			Grade 5 No Penalty 450 (275+ Ranking)	450	1650
	Night	WGL	Restricted Win Final 460 (3 - 6 Wins)	460	1900
			Restricted Win 460 (1 - 3 Wins)(275+ Ranking)	460	1650
			Grade 5 No Penalty 400 (275+ Ranking)	400	1650
			Mixed 6/7 Heat 400	400	1650
			S/E Veteran 460	460	1650
			Grade 5 No Penalty 485 (250+ Ranking)	485	1650
Wed, 2 Dec	Day	MEP	GDR Grade 5 725	725	3300
			Restricted Win 600 (0 - 2 Wins)(225+ Ranking)	600	1900
			Grade 5 No Penalty 600 (225+ Ranking)	600	1900
			Grade 5 No Penalty 525 (225+ Ranking)	525	1650
			Restricted Win 525 (1 - 3 Wins)(225+ Ranking)	525	1650
			Restricted Win Heat 525 (3 - 6 Wins)(Final MEA 12/12)	525	1650
	Twilight	BEN	Provincial Non-Penalty - Tier 3 (Half Stakes)		
	Night	BAL	Mixed 6/7 Final 450	450	1900
			Restricted Win 390 (1 - 3 Wins)(275+ Ranking)	390	1650
			Grade 5 No Penalty 545 (275+ Ranking)	545	1650
		CRN	Grade 5 Heat 390	390	1650
			Restricted Win Final 520 (3 - 6 Wins)	520	1900
			GRV Vic Bred Series Grade 5 Heat 520 (Vic Bred Only)(VICGREYS)	520	1650
Thu, 3 Dec	Day	SHP	Provincial Non-Penalty - Tier 3 (Full Stakes)		
	Twilight	WGL	Provincial Non-Penalty - Tier 3 (Half Stakes)		
	Night	HOR	Grade 5 410 (Bitches Only)	410	1650
			Grade 5 No Penalty 485 (250+ Ranking)	485	1650
			Restricted Win 410 (1 - 3 Wins)(250+ Ranking)	410	1650
		SAN	Mixed 6/7 Final 595 (Final SAN 3/12)	595	7480
			Grade 5 No Penalty 460 (275+ Ranking)	460	1650
Fri, 4 Dec	Day	HVL	Provincial Non-Penalty - Tier 3 (Half Stakes)		
	Twilight	BEN	Restricted Win 425 (1 - 3 Wins)(275+ Ranking)	425	1650
			Grade 5 Heat 425	425	1650
			Maiden Final 425	425	1650
	Night	GEL	Dual Distance Grade 5 Final 520 (Dual Distance. Must be Grade 5 over 460m and 520m)	520	3500
			Restricted Win 400 (1 - 3 Wins)(275+ Ranking)	400	1650
			Grade 5 No Penalty 460 (275+ Ranking)	460	1650
			Grade 5 Heat 400	400	1650
		WGL	GDR Restricted Win 680 (0 - 4 Wins)	680	3300
			Grade 5 460 (Bitches Only)	460	1650
			Restricted Win 400 (1 - 3 Wins)(275+ Ranking)	400	1650
			Grade 5 No Penalty 460 (275+ Ranking)	460	1650
Sat, 5 Dec	Morning	SHP	Provincial Half Stakes		
	Twilight	BAL	Ballarat Cup S/E Heat 450	450	5280
	Night	MEA	Maiden Final 525 (Final MEA 5/12)	525	5280
			Grade 5 Final 725	725	12000
Sun, 6 Dec	Day	HVL	GRV VIC BRED Series - Maiden Heat 350 (Vic Bred Only)(VICGREYS)	350	825
			Christmas Cup S/E Heat 350	350	825
			S/E Veteran 350 (250+ Ranking)	350	825
			GRV Vic Bred Series Grade 5 Final 350 (Vic Bred Only)	350	3300
	Twilight	SAP	Grade 5 No Penalty 595 (225+ Ranking)	595	1900
			Restricted Win 595 (0 - 2 Wins)(225+ Ranking)	595	1900
			Restricted Win 515 (1 - 3 Wins)(225+ Ranking)	515	1650
			Grade 5 Heat 515 (Final SAN 10/12)	515	1650
		SLE	Sale Distance Championship S/E Heat 650 (Maidens Ineligible)	650	2185
			Grade 5 No Penalty 520 (250+ Ranking)	520	1650
			Restricted Win 440 (1 - 3 Wins)(250+ Ranking)	440	1650
			G.J Gardner Homes Grade 5 Heat 440	440	1405

DATE	TIMESLOT	TRACK	TITLE OF EVENT	DISTANCE	WINNER
Mon, 7 Dec	Day	WBL	Rank Limit (Half Stakes)(250+ Ranking)		
	Twilight	BAL	Provincial Non-Penalty - Tier 3 (Half Stakes)		
		CRN	Provincial Non-Penalty - Tier 3 (Half Stakes)		
	Night	BEN	Grade 5 425 (Bitches Only)(No City Wins)	425	1650
			Grade 5 No Penalty 500 (275+ Ranking)	500	1650
			Restricted Win 425 (1 - 3 Wins)(275+ Ranking)	425	1650
Tue, 8 Dec	Day	HVL	Provincial Non-Penalty - Tier 3 (Half Stakes)		
	Twilight	GEL	Provincial Non-Penalty - Tier 3 (Half Stakes)		
		HOR	GRV VIC BRED Series - Restricted Win Final 410 (1 - 4 Wins)(Vic Bred Only)(VICGREYS)	410	4250
			GRV Vic Bred Series Grade 5 Heat 485 (Vic Bred Only)(VICGREYS)	485	1650
			Grade 5 No Penalty 410 (250+ Ranking)	410	1650
			Restricted Win 485 (1 - 3 Wins)(250+ Ranking)	485	1650
	Night	WGL	Mixed 6/7 Final 400	400	1900
			Grade 5 Heat 460	460	1650
			Restricted Win 400 (1 - 3 Wins)(275+ Ranking)	400	1650
Wed, 9 Dec	Day	MEP	Restricted Win 600 (0 - 2 Wins)(225+ Ranking)	600	1900
			Grade 5 No Penalty 600 (225+ Ranking)	600	1900
			Grade 5 No Penalty 525 (225+ Ranking)	525	1650
			Mixed 6/7 Heat 525 (Final MEA 19/12)	525	1650
	Twilight	BEN	Provincial Non-Penalty - Tier 3 (Half Stakes)		
	Night	BAL	Grade 5 Final 390	390	1900
			Grade 5 No Penalty 450 (275+ Ranking)	450	1650
			Restricted Win 450 (1 - 3 Wins)(275+ Ranking)	450	1650
			Maiden Heat 450	450	1405
		CRN	GRV Vic Bred Series Grade 5 Final 520 (Vic Bred Only)(VICGREYS)	520	3300
			Grade 5 No Penalty 311 (275+ Ranking)	311	1650
			Mixed 6/7 Heat 520	520	1650
			Restricted Win 311 (1 - 3 Wins)(275+ Ranking)	311	1650
Thu, 10 Dec	Day	HOR	Restricted Win 410 (1 - 3 Wins)(250+ Ranking)	410	1650
	Twilight	WGL	Grade 5 No Penalty 485 (250+ Ranking)	485	1650
		SAN	Provincial Non-Penalty - Tier 3 (Half Stakes)		
	Night	WBL	Grade 5 Final 515 (Final SAN 10/12)	515	6540
			Grade 5 No Penalty 390 (275+ Ranking)	390	1650
			Restricted Win 450 (1 - 3 Wins)(275+ Ranking)	450	1650
Fri, 11 Dec	Day	HVL	Restricted Win Heat 450 (3 - 6 Wins)	450	1650
	Twilight	GEL	Provincial Non-Penalty - Tier 3 (Half Stakes)		
			GDR Special Event 680	680	3585
			Grade 5 Final 400	400	1900
			Restricted Win 460 (1 - 3 Wins)(275+ Ranking)	460	1650
			Grade 5 No Penalty 400 (275+ Ranking)	400	1650
			S/E Veteran 400	400	1650
	Night	BEN	Grade 5 Final 425	425	1900
			Restricted Win 500 (1 - 3 Wins)(275+ Ranking)	500	1650
			Grade 5 No Penalty 425 (275+ Ranking)	425	1650
			Restricted Win Heat 425 (3 - 6 Wins)	425	1650
		WGL	Grade 5 No Penalty 460 (275+ Ranking)	460	1650
			Restricted Win 400 (1 - 3 Wins)(275+ Ranking)	400	1650
			Grade 5 400 (Bitches Only)(No City Wins)	400	1650
Sat, 12 Dec	Morning	GEL	Provincial Half Stakes		
	Twilight	BAL	Ballarat to The Meadows Grade 5 Heat 545 (No City Wins)(Final MEA 19/12)	545	1650
			Ballarat Cup S/E Group 2 450	450	47000
			Restricted Win 545 (1 - 3 Wins)(275+ Ranking)	545	1650
			Grade 5 390 (Bitches Only)(No City Wins)	390	1650
	Night	MEA	Grade 5 No Penalty 450 (275+ Ranking)	450	1650
			Restricted Win Final 525 (3 - 6 Wins)(Final MEA 12/12)	525	6540
Sun, 13 Dec	Day	HVL	GRV VIC BRED Series - Maiden Final 350 (Vic Bred Only)(VICGREYS)	350	7750
			Christmas Cup S/E Final 350	350	5000
			Restricted Win 300 (1 - 3 Wins)(275+ Ranking)	300	1650
			Grade 5 No Penalty 350 (275+ Ranking)	350	1650
	Twilight	SAP	Laurel's Classic S/E Heat 515 (Bitches Only)(Whelped on/after 1 Jun 2018)(Maidens Ineligible)	515	6790
			Grade 5 No Penalty 595 (225+ Ranking)	595	1900
			Restricted Win 595 (0 - 2 Wins)(225+ Ranking)	595	1900
			Restricted Win 515 (1 - 3 Wins)(225+ Ranking)	515	1650
		SLE	GDR Special Event 650	650	3585
			G.J Gardner Homes Grade 5 Final 440	440	1875
			GRV VIC BRED Series - Mixed 6/7 Heat 440 (Vic Bred Only)(VICGREYS)	440	1650
			S/E Veteran 440 (200+ Ranking)	440	1650
			Restricted Win 520 (1 - 3 Wins)(250+ Ranking)	520	1650
			Grade 5 No Penalty 440 (250+ Ranking)	440	1650
			Sale Distance Championship S/E Final 650 (Maidens Ineligible)	650	10000

NOMINATIONS - (03) 8329 1111

Mon to Fri: 7:30am - 12noon
Online Nominations - 24 hours a day, 7 days a week

SCRATCHINGS - (03) 8329 1100

Weekdays: 7:30am - 4:30pm
Sat/Sun: 7:30am - 9:00am & 3:00pm - 4:30pm

DATE	TIMESLOT	TRACK	TITLE OF EVENT	DISTANCE	WINNER
Mon, 14 Dec	Day	WBL	Rank Limit (Half Stakes)(250+ Ranking)		
		BAL	Provincial Non-Penalty - Tier 3 (Half Stakes)		
	Twilight	CRN	Provincial Non-Penalty - Tier 3 (Half Stakes)		
	Night	SHP	GDR Restricted Win 650 (0 - 4 Wins)	650	3300
			S/E Veteran 385 (250+ Ranking)	385	1650
			Restricted Win Heat 385 (3 - 6 Wins)	385	1650
			Grade 5 No Penalty 385 (275+ Ranking)	385	1650
			Restricted Win 450 (1 - 3 Wins)(275+ Ranking)	450	1650
Tue, 15 Dec	Twilight	HOR	GRV Vic Bred Series Grade 5 Final 485 (Vic Bred Only)(VICGREYS)	485	3300
			Grade 5 No Penalty 485 (250+ Ranking)	485	1650
			Restricted Win 410 (1 - 3 Wins)(250+ Ranking)	410	1650
			Maiden Heat 410	410	1405
			Restricted Win Heat 350 (3 - 6 Wins)	350	825
			S/E Veteran 300 (250+ Ranking)	300	825
	Night	WGL	Grade 5 Final 460	460	1900
			Grade 5 No Penalty 400 (275+ Ranking)	400	1650
			Restricted Win 460 (1 - 3 Wins)(275+ Ranking)	460	1650
			GRV VIC BRED Series - Maiden Heat 460 (Vic Bred Only)(VICGREYS)	460	1405
			Grade 5 No Penalty 600 (225+ Ranking)	600	1900
Wed, 16 Dec	Day	MEP	Restricted Win 600 (0 - 2 Wins)(225+ Ranking)	600	1900
			Grade 5 Heat 525 (Final MEA 26/12)	525	1650
			Restricted Win 525 (1 - 3 Wins)(225+ Ranking)	525	1650
			Provincial Non-Penalty - Tier 3 (Half Stakes)		
	Night	BAL	Restricted Win 390 (1 - 3 Wins)(275+ Ranking)	390	1650
			Restricted Win Heat 450 (3 - 6 Wins)	450	1650
			Grade 5 No Penalty 545 (275+ Ranking)	545	1650
			Maiden Final 450	450	1650
		CRN	Mixed 6/7 Final 520	520	1900
			GRV VIC BRED Distance Series - Restricted Win Heat 699 (0 - 6 Wins)(No City Wins)	699	1900
			(Vic Bred Only)(VICGREYS)		
			S/E Veteran 520	520	1650
			Grade 5 No Penalty 520 (275+ Ranking)	520	1650
			Maiden Heat 311	311	1405
Thu, 17 Dec	Day	SHP	Provincial Non-Penalty - Tier 3 (Half Stakes)		
	Twilight	WGL	Provincial Non-Penalty - Tier 3 (Half Stakes)		
	Night	SAN	Laurel's Classic S/E Group 2 515 (Bitches Only)(Whelped on/after 1 Jun 2018)	515	50000
			(Maidens Ineligible)		
		WBL	GDR Special Event 650	650	3585
			Restricted Win Final 450 (3 - 6 Wins)	450	1900
			Mixed 6/7 Heat 390	390	1650
Fri, 18 Dec	Day	HVL	Provincial Non-Penalty - Tier 3 (Half Stakes)		
	Twilight	BEN	Restricted Win Final 425 (3 - 6 Wins)	425	1900
			Restricted Win 425 (1 - 3 Wins)(275+ Ranking)	425	1650
			Grade 5 No Penalty 500 (275+ Ranking)	500	1650
			Grade 5 No Penalty 545 (275+ Ranking)	545	1650
	Night	BAL	Grade 5 390 (Bitches Only)	390	1650
			Restricted Win 450 (1 - 3 Wins)(275+ Ranking)	450	1650
			GRV VIC BRED Series - Mixed 6/7 Final 440 (Vic Bred Only)(VICGREYS)	440	4250
		SLE	Xmas Gift S/E Heat 440	440	1900
			Summer Cup S/E Heat 520	520	1900
			Grade 5 No Penalty 440 (250+ Ranking)	440	1650
			Restricted Win 440 (1 - 3 Wins)(250+ Ranking)	440	1650
Sat, 19 Dec	Morning	SHP	Rank Limit (Half Stakes)(200+ Ranking)		
	Twilight	CRN	Grade 5 311 (Bitches Only)(No City Wins)	311	1650
			Restricted Win 520 (1 - 3 Wins)(275+ Ranking)	520	1650
			Grade 5 No Penalty 311 (275+ Ranking)	311	1650
	Night	MEA	Ballarat to The Meadows Grade 5 Final 525 (No City Wins)(Final MEA 19/12)	525	6540
Sun, 20 Dec	Day	HVL	Mixed 6/7 Final 525 (Final MEA 19/12)	525	6540
			S/E Veteran 350 (250+ Ranking)	350	825
			Mixed 6/7 Heat 350	350	825
	Twilight	SAP	Restricted Win Final 350 (3 - 6 Wins)	350	825
			GDR Restricted Win 715 (0 - 4 Wins)	715	3300
			Grade 5 No Penalty 515 (225+ Ranking)	515	1650
			Restricted Win 515 (1 - 3 Wins)(225+ Ranking)	515	1650
			Maiden Heat 515 (Final SAN 24/12)	515	1405
		SLE	Sale Cup S/E Heat 650	650	6030
			Grade 5 No Penalty 520 (250+ Ranking)	520	1650
			Restricted Win 520 (1 - 3 Wins)(250+ Ranking)	520	1650
			Rising Star Restricted Win Heat 440 (1 - 4 Wins)	440	1405
Mon, 21 Dec	Day	WBL	Rank Limit (Half Stakes)(250+ Ranking)		
	Twilight	BAL	Provincial Non-Penalty - Tier 3 (Half Stakes)		
		WGL	Provincial Half Stakes		
	Night	SHP	Restricted Win Final 385 (3 - 6 Wins)	385	1900
			Grade 5 No Penalty 450 (275+ Ranking)	450	1650
			Restricted Win 385 (1 - 3 Wins)(275+ Ranking)	385	1650
			Maiden Heat 385	385	1405

VICGREY

To be eligible a greyhound needs to be whelped in Victoria i.e. its earbrand begins with a "V".

VICBRED

To be eligible a greyhound needs to be whelped in Victoria i.e. its earbrand begins with a "V".

DATE	TIMESLOT	TRACK	TITLE OF EVENT	DISTANCE	WINNER
Tue, 22 Dec	Day	HVL	Provincial Non-Penalty - Tier 3 (Half Stakes)		
		GEL	Provincial Non-Penalty - Tier 3 (Half Stakes)		
	Twilight	HOR	Grade 5 No Penalty 410 (250+ Ranking)	410	1650
			Restricted Win 485 (1 - 3 Wins)(250+ Ranking)	485	1650
			Restricted Win Heat 485 (3 - 6 Wins)	485	1650
			Maiden Final 410	410	1650
	Night	WGL	GRV VIC BRED Series - Maiden Final 460 (Vic Bred Only)(VICGREYS)	460	7750
			Restricted Win Heat 400 (3 - 6 Wins)	400	1650
			Restricted Win 400 (1 - 3 Wins)(275+ Ranking)	400	1650
			Grade 5 No Penalty 460 (275+ Ranking)	460	1650
Wed, 23 Dec	Day	MEP	Restricted Win 600 (0 - 2 Wins)(225+ Ranking)	600	1900
			Grade 5 No Penalty 600 (225+ Ranking)	600	1900
			Grade 5 No Penalty 525 (225+ Ranking)	525	1650
			Restricted Win 525 (1 - 3 Wins)(225+ Ranking)	525	1650
			Maiden Heat 525 (Final MEA 2/1)	525	1405
	Twilight	BEN	Provincial Non-Penalty - Tier 3 (Half Stakes)		
	Night	BAL	GDR Restricted Win 660 (0 - 4 Wins)	660	3300
			Restricted Win Final 450 (3 - 6 Wins)	450	1900
			Grade 5 No Penalty 390 (275+ Ranking)	390	1650
			S/E Veteran 450	450	1650
		CRN	GRV Vic Bred Series - Grade 5 Heat 450 (Vic Bred Only)	450	1650
			GRV VIC BRED Distance Series - Restricted Win Final 699 (0 - 6 Wins)(No City Wins) (Vic Bred Only)(VICGREYS)	699	5300
			Restricted Win Heat 311 (3 - 6 Wins)	311	1650
			Maiden Final 311	311	1650
			Restricted Win 520 (1 - 3 Wins)(275+ Ranking)	520	1650
Thu, 24 Dec	Day	SHP	Provincial Non-Penalty - Tier 3 (Half Stakes)		
	Twilight	WGL	Provincial Non-Penalty - Tier 3 (Half Stakes)		
	Night	SAN	Maiden Final 515 (Final SAN 24/12)	515	5280
		WBL	Mixed 6/7 Final 390	390	1900
			Grade 5 Heat 390	390	1650
			Restricted Win 450 (1 - 3 Wins)(275+ Ranking)	450	1650
			S/E Veteran 390 (200+ Ranking)	390	1650
Sat, 26 Dec	Morning	GEL	Rank Limit (Half Stakes)(200+ Ranking)		
	Twilight	SLE	Sale Cup S/E Group 1 650	650	75000
			Rising Star Restricted Win Final 440 (1 - 4 Wins)	440	6645
			Summer Cup S/E Final 520	520	6645
			Xmas Gift S/E Final 440	440	6645
			Restricted Win 440 (1 - 3 Wins)(250+ Ranking)	440	1650
	Night	MEA	Grade 5 No Penalty 440 (250+ Ranking)	440	1650
			Grade 5 Final 525 (Final MEA 26/12)	525	6540
			Silver Chief S/E Heat 525 (Dogs Only)(Whelped on/after 1 Sep 2018)(Maidens Ineligible)	525	6540
Sun, 27 Dec	Day	HVL	Mixed 6/7 Final 350	350	1900
			Grade 5 No Penalty 300 (275+ Ranking)	300	1650
			Restricted Win 350 (1 - 3 Wins)(275+ Ranking)	350	1650
	Twilight	SAP	Restricted Win Heat 595 (3 - 6 Wins)	595	1900
			Restricted Win 595 (0 - 2 Wins)(225+ Ranking)	595	1900
			Restricted Win 515 (1 - 3 Wins)(225+ Ranking)	515	1650
			Grade 5 No Penalty 515 (225+ Ranking)	515	1650
			GDR Special Event 680	680	3585
		WGL	Restricted Win Final 400 (3 - 6 Wins)	400	1900
			Mixed 6/7 Heat 460	460	1650
			Restricted Win 400 (1 - 3 Wins)(275+ Ranking)	400	1650
Mon, 28 Dec	Day	SHP	Grade 5 No Penalty 460 (275+ Ranking)	460	1650
			S/E Veteran 400	400	1650
			S/E Veteran 450 (250+ Ranking)	450	1650
			Grade 5 No Penalty 385 (275+ Ranking)	385	1650
			Maiden Final 385	385	1650
	Twilight	BAL	Mixed 6/7 Heat 385	385	1650
		CRN	Restricted Win 450 (1 - 3 Wins)(275+ Ranking)	450	1650
	Night	WBL	Provincial Non-Penalty - Tier 3 (Half Stakes)		
Tue, 29 Dec	Day	HVL	Provincial Non-Penalty - Tier 3 (Half Stakes)		
		GEL	Provincial Non-Penalty - Tier 3 (Half Stakes)		
	Twilight	HOR	Rank Limit (Half Stakes)(250+ Ranking)		
			Restricted Win Final 485 (3 - 6 Wins)	485	1900
			Mixed 6/7 Heat 410	410	1650
			Grade 5 No Penalty 410 (250+ Ranking)	410	1650
	Night	SLE	Restricted Win 485 (1 - 3 Wins)(250+ Ranking)	485	1650
			Restricted Win 520 (1 - 3 Wins)(250+ Ranking)	520	1650
			Grade 5 No Penalty 520 (250+ Ranking)	520	1650

NOMINATIONS - (03) 8329 1111

Mon to Fri: 7:30am - 12noon
Online Nominations - 24 hours a day, 7 days a week

SCRATCHINGS - (03) 8329 1100

Weekdays: 7:30am - 4:30pm
Sat/Sun: 7:30am - 9:00am & 3:00pm - 4:30pm

DATE	TIMESLOT	TRACK	TITLE OF EVENT	DISTANCE	WINNER
Wed, 30 Dec	Day	MEP	GDR Novice Grade 7 725	725	3300
			Restricted Win Heat 600 (3 - 6 Wins)(Final MEA 9/1)	600	1900
			Restricted Win 600 (0 - 2 Wins)(225+ Ranking)	600	1900
			Restricted Win 525 (1 - 3 Wins)(225+ Ranking)	525	1650
			Grade 5 No Penalty 525 (225+ Ranking)	525	1650
	Twilight	BEN	Provincial Non-Penalty - Tier 3 (Half Stakes)		
	Night	CRN	Cranbourne to Sandown Restricted Win Heat 520 (Final SAN 7/1)	520	1650
			Restricted Win Final 311 (3 - 6 Wins)	311	1900
			Grade 5 No Penalty 311 (275+ Ranking)	311	1650
			Restricted Win 520 (1 - 3 Wins)(275+ Ranking)	520	1650
		WBL	Seaside Distance Challenge - GDR S/E Heat 650	650	2185
			Grade 5 Final 390	390	1900
			GRV VIC BRED Series - Maiden Heat 450 (Vic Bred Only)	450	1405
Thu, 31 Dec	Day	HVL	Provincial Non-Penalty - Tier 3 (Half Stakes)		
	Twilight	SHP	Provincial Non-Penalty - Tier 3 (Half Stakes)		
	Night	SAN	Restricted Win Final 595 (3 - 6 Wins)	595	7480
		SLE	GDR Restricted Win 650 (0 - 4 Wins)	650	3300
			Restricted Win 440 (1 - 3 Wins)(250+ Ranking)	440	1650
			Grade 5 No Penalty 440 (250+ Ranking)	440	1650
			Maiden Heat 440	440	1405

Nomination Close Times – Meetings held November 9 onwards

Please note that an updated nomination close time schedule will be implemented for race meetings conducted on November 9 onwards. The change is due to GRV now hosting 26 races meetings per week.

Key points to note:

- No meetings closing at the same time so trainers are aware of what meeting will be given priority and graded first.
- Introduction of half hour closing times.
- 9am the earliest standard closing time for any reserves that might have been waiting on scratchings to finalise at 8:30am.

DAY OF MEETING	TIMESLOT	USUAL CLUB	NOM CLOSE DAY	NOM CLOSE TIME
WEDNESDAY	DAY	THE MEADOWS (MEP)	MONDAY	9:00 AM
WEDNESDAY	NIGHT	CRANBOURNE	MONDAY	9:30 AM
WEDNESDAY	NIGHT	BALLARAT	MONDAY	10:00 AM
THURSDAY	DAY	SHEPPARTON	MONDAY	10:30 AM
THURSDAY	TWILIGHT	WARRAGUL	MONDAY	11:00 AM
THURSDAY	NIGHT	SANDOWN PARK	MONDAY	11:30 AM
THURSDAY	NIGHT	WARRNAMBOOL	TUESDAY	9:00 AM
FRIDAY	TWILIGHT	BENDIGO	TUESDAY	9:30 AM
FRIDAY	NIGHT	GEELONG	TUESDAY	10:00 AM
FRIDAY	NIGHT	WARRAGUL/SALE	TUESDAY	10:30 AM
FRIDAY	DAY	HEALESVILLE	WEDNESDAY	9:00 AM
SATURDAY	MORNING	ROTATE	WEDNESDAY	9:30 AM
SATURDAY	TWILIGHT	ROTATE	WEDNESDAY	10:00 AM
SATURDAY	NIGHT	THE MEADOWS	WEDNESDAY	10:30 AM
SUNDAY	TWILIGHT	SALE	WEDNESDAY	11:00 AM
SUNDAY	DAY	HEALESVILLE	THURSDAY	9:00 AM
SUNDAY	DAY	SANDOWN PARK (SAP)	THURSDAY	9:30 AM
MONDAY	DAY	WARRNAMBOOL	THURSDAY	10:00 AM
MONDAY	TWILIGHT	CRANBOURNE/WARRAGUL	THURSDAY	10:30 AM
MONDAY	TWILIGHT	BALLARAT	THURSDAY	11:00 AM
MONDAY	NIGHT	SHEPPARTON	FRIDAY	9:00 AM
TUESDAY	DAY	HEALESVILLE	FRIDAY	9:30 AM
TUESDAY	TWILIGHT	GEELONG	FRIDAY	10:00 AM
TUESDAY	TWILIGHT	HORSHAM	FRIDAY	10:30 AM
TUESDAY	NIGHT	WARRAGUL	FRIDAY	11:00 AM
WEDNESDAY	TWILIGHT	BENDIGO	FRIDAY	11:30 AM



LATEST LITTERS

SIRE	DAM	WHELPED	DESCRIPTION	BREEDER	SUBURB	TELEPHONE	FS FACILITY
ANDO'S MAC	GOLDEN ROMANCE	Aug 31, 2020	4 Males 4 Females	FAY RIDIS	MICKLEHAM	0450 227 811	SANDOWN VETERINARY CLINIC
ASTON DEE BEE	CRUZIN'	Jun 22, 2020	2 Males 1 Females	ROBERT CONWAY	BUNYIP	0418 316 136	SANDOWN VETERINARY CLINIC
	DESTINI GOLD	Aug 25, 2020	8 Males 3 Females	RIVERDALE (SYN) MATTHEW ABELA	LITTLE RIVER	0437 602 977	CRAIGIEBURN ANIMAL HOSPITAL
	DYNA SARAH	Aug 07, 2020	3 Males	ANDREA GURRY	NHILL	0412 749 386	ADELAIDE PLAINS VET SURGERY
	INTER ELESHA	Jun 24, 2020	5 Males 4 Females	TONY JOE AND JOE (SYN) TONY INTERLIGI	ENDEAVOUR HILLS	0425 809 441	SANDOWN VETERINARY CLINIC
	IRONBARK LASS	Sep 20, 2020	2 Males 2 Females	GLEN CONNELL	STRADBROKE	0468 934 789	WALNUT VETERINARY CLINIC
	KUNG FU HUSTLE	Sep 14, 2020	4 Males 3 Females	ALFRED DEBATTISTA	SEDGWICK	0458 542 934	MCIVOR ROAD VET CENTRE
	LADY CAULET	Aug 15, 2020	3 Males 3 Females	COLIN BRENNAN	ROSS CREEK	0412 539 911	WALNUT VETERINARY CLINIC
	LITTLE FRAN	Sep 22, 2020	1 Males 1 Females	VITO INGUANTI	GNOTUK	0417 388 264	TERANG VETERINARY CLINIC
	OAKLEIGH ROSE	Aug 31, 2020	8 Males 3 Females	CHRIS MOORE	HUNTINGDALE	0415 206 651	SANDOWN VETERINARY CLINIC
	SAMSARA LASS	Aug 20, 2020	3 Males 5 Females	JASON COLLIS	LARA	0403 320 919	SANDOWN VETERINARY CLINIC
AUSSIE INFRARED	SOMERTON MAY	Jun 02, 2020	5 Males 4 Females	LOUIE CARDILLO	SALE	0412 379 911	MAFFRA VETERINARY CENTRE
	SUMMER SKYE	Jun 29, 2020	4 Males 3 Females	RONALD MCCULLAGH	LARA	0419 883 854	SANDOWN VETERINARY CLINIC
	VELOCITY ALAINA	Sep 27, 2020	2 Males 2 Females	BENJAMIN THORNEYCROFT	DON VALLEY	0448 848 421	WALNUT VETERINARY CLINIC
	ZULU MYSTIQUE	Sep 08, 2020	2 Males 4 Females	TONY SALPIGTIDIS	PLENTY	0417 505 414	SANDOWN VETERINARY CLINIC
	MISS ELOISE	Jun 05, 2020	3 Males 6 Females	GEOFFREY HOWELL	PEARCEDEALE	0458 142 747	SANDOWN VETERINARY CLINIC
	OKAWA IN BLACK	Aug 19, 2020	6 Males 5 Females	GLEN FARDELL	SALE	0437 031 274	WALNUT VETERINARY CLINIC
	PAT'S LASS	Jun 26, 2020	4 Males 3 Females	TRISTAN DALES	DROUIN	0474 956 734	SANDOWN VETERINARY CLINIC
BANJO BOY	SAW BLAZE	Jul 01, 2020	1 Males 7 Females	STAVROS KIPITIDIS	CRANBOURNE SOUTH	0433 229 065	SANDOWN VETERINARY CLINIC
	VALENCIA GEM	Jul 13, 2020	3 Males 6 Females	JENNIFER GIESCHEN	VALENCIA CREEK	0459 260 952	SANDOWN VETERINARY CLINIC
	WHO'S GOT BAMS	Jul 04, 2020	3 Males 5 Females	JUSTIN BOWMAN	TOORLOO ARM	0417 707 520	SANDOWN VETERINARY CLINIC
	EMILIA CASH	Oct 03, 2020	1 Females	WILLIAM DAWES	MOE	0413 621 416	WALNUT VETERINARY CLINIC
BARCIA BALE	ANNIE LAVA	Jun 13, 2020	2 Males	LAVA STREET (SYN) NOEL MUGAVIN	WARRNAMBOOL	0478 023 472	SANDOWN VETERINARY CLINIC
	ELEVATED	Jun 15, 2020	4 Males 2 Females	HARRY MANOLITSIS	LYSTERFIELD SOUTH	0431 006 611	SANDOWN VETERINARY CLINIC
	INVICTUS REIGN	Jun 27, 2020	2 Males 1 Females	INVICTUS KENNELS (SYN) GEORGE ZOGULAS	BLIND BIGHT	0437 500 852	SANDOWN VETERINARY CLINIC
	SEMANTIC SHIFT	Jun 06, 2020	6 Males 5 Females	JOHN TAYLOR	PETERBOROUGH	0458 638 679	MCIVOR ROAD VET CENTRE
	THANKS CHERYL	May 21, 2020	4 Males 4 Females	DAVID BURNETT	SOUTH GEELONG	0417 990 660	SANDOWN VETERINARY CLINIC
BELLA INFRARED	AFIRE LOVE	May 03, 2020	6 Males 2 Females	MICHAEL CROWE	MYRNIONG	0401 697 229	MCIVOR ROAD VET CENTRE
BERNARDO	OUR DELTA ROSE	Jun 06, 2020	2 Males 1 Females	SHARON-LEE CHIGNELL	ROSEDALE	0408 330 142	MAFFRA VETERINARY CENTRE

SIRE	DAM	WHELPED	DESCRIPTION	BREEDER	SUBURB	TELEPHONE	FS FACILITY
COLLISION	BUNNING SNAG	May 14, 2020	4 Males 7 Females	Steven Taranto	TYABB	0438152437	WALNUT VETERINARY CLINIC
COSMIC CHIEF	ROSE ROSE	Sep 05, 2020	1 Males 2 Females	SHARON-LEE CHIGNELL	ROSEDALE	0408 330 142	MAFFRA VETERINARY CENTRE
COSMIC RUMBLE	PEPPER ROCK	Sep 05, 2020	3 Males 5 Females	CYPRESS LODGE (SYN) CRAIG ELLIOT	GREENHILL	0430 474 274	MCIVOR ROAD VET CENTRE
DYNA CHANCER	UPTOWN FUNK	Oct 07, 2020	1 Males 5 Females	PHILIP LENEHAN	TOOLONG	0428 367 530	THE VET GROUP
FABREGAS	SUBMISSION	Sep 25, 2020	4 Males 2 Females	AMANDA TULLIO	TAYLORS LAKES	0421569259	SANDOWN VETERINARY CLINIC
	YIELDING	Jul 07, 2020	8 Males 1 Females	RENEE NEW	WENDOUREE	0417 626 886	SANDOWN VETERINARY CLINIC
FERAL FRANKY	MILWAUKEE MISS	Sep 08, 2020	3 Males 1 Females	JASON COLLIS	LARA	0403 320 919	SANDOWN VETERINARY CLINIC
	SUPER FAY	Sep 15, 2020	1 Males 2 Females	RYAN HENDY	CRANBOURNE NORTH	0422 156 105	ADELAIDE PLAINS VET SURGERY
FERNANDO BALE	AMY'S FIREWORK	Jun 04, 2020	1 Males	CHECK IT OUT (SYN) PAT SOFRA	CRANBOURNE	0412 599 002	SANDOWN VETERINARY CLINIC
	EMILY JANE	May 01, 2020	3 Males 5 Females	PAUL BUSHHELL	GLENROY	0419 569 918	SANDOWN VETERINARY CLINIC
	FLOWING	Sep 18, 2020	4 Males 5 Females	AMANDA TULLIO	TAYLORS LAKES	0421569259	SANDOWN VETERINARY CLINIC
	GOT ONE BACK	May 17, 2020	2 Males 6 Females	DEAN BAKER	WUNGHNU	0428 622 012	MCIVOR ROAD VET CENTRE
	IRELAND'S FORCE	Aug 23, 2020	2 Males	SODA LODGE (SYN) ASHLEY ONLEY	CROYDON NORTH	0428 606 487	SANDOWN VETERINARY CLINIC
	JANE'S INTENTION	Jul 17, 2020	6 Males 4 Females	O'Neill Racing (SYN) TODD O'NEILL	PEARCEDALE	0408 317 966	SANDOWN VETERINARY CLINIC
	MRS. THURSDAY	Aug 22, 2020	2 Males	NICHOLAS DE LA ROCHE	BEACONSFIELD	0410 505 122	SANDOWN VETERINARY CLINIC
	ROCKA HULA BABY	Sep 05, 2020	3 Males 2 Females	SEE THE DREAM (SYN) SERGIO BUCCILLI	CANTERBURY	0418 103 147	SANDOWN VETERINARY CLINIC
	SIMPLY ELITE	Aug 26, 2020	4 Males 6 Females	PAT SOFRA	CRANBOURNE	0412 599 002	SANDOWN VETERINARY CLINIC
	TEARS I'M NOT	Oct 14, 2020	1 Males 7 Females	TRACEY SALTER	CROWLANDS	0432 430 761	SANDOWN VETERINARY CLINIC
FLYING STANLEY	ROSE PETAL ZARR	May 29, 2020	2 Males 1 Females	ASHLEY CRAVEN	WANGARATTA	0428 987 287	SANDOWN VETERINARY CLINIC
FULLY LOADED	CHOCHLIK	Oct 12, 2020	3 Males 3 Females	MICHAEL THARLE	DEVON MEADOWS	0423634135	WALNUT VETERINARY CLINIC
ICE TRUCKER	MERINDA HANNAH	Oct 14, 2020	4 Males 3 Females	LUKE MITCHELL	MERINDA	0499 881 171	CRAIGIEBURN ANIMAL HOSPITAL
KINLOCH BRAE	SUBWAY MISS	Jun 02, 2020	4 Males 2 Females	LINDA EDGERTON	BROADFORD	0421 055 510	Colyton Veterinary Hospital
KIOWA MON MANNY	DYNA PEANUT	May 18, 2020	7 Females	CRAIG BURNS	BALLIANG	0413 717 173	SANDOWN VETERINARY CLINIC
KONOMI	CARLA ZEUS	May 28, 2020	3 Males 2 Females	DONNA KNIGHT	TALBOT	0409 361 700	COLYTON VETERINARY HOSPITAL
MAGIC SPRITE	SIMPLE AND PLAIN	Sep 28, 2020	4 Males 3 Females	SPARKLE AND FADE (SYN)		0418 349 817	"c/- Veterinary Associates Takanini Limited 152a Great South Road Takanini"
MEPUNGA BLAZER	LOCH FREDDIE	Sep 07, 2020		GEORGE FARRUGIA	ESSENDON	0418 883 843	Sandown Veterinary Clinic
	MEPUNGA DEBBIE	Aug 28, 2020	3 Males	JOY MCDOWALL	NULLAWARRE	0408 569 680	TERANG VETERINARY CLINIC
	MEPUNGA GAL	May 09, 2020	3 Males 6 Females	ROSS LYONS	LONGLEA	0438 894 742	MCIVOR ROAD VET CENTRE
	PENELOPES CRUZN	May 03, 2020	6 Males 3 Females	SEAN CACHIA	ANAKIE	0400 332 046	CRAIGIEBURN ANIMAL HOSPITAL
	RIVIERA CRUZ	Sep 15, 2020	2 Males 3 Females	MATTHEW CLARK	BRIAGOLONG	0498136917	MAFFRA VETERINARY CENTRE
	SHARED EQUITY	Sep 25, 2020		CHAMPAGNE PTN (SYN)		0418 490 270	Kudah Veterinary Services
	YOU RIPPA PIPPA	May 01, 2020	5 Males 4 Females	BERYL FULTON	ECKLIN SOUTH	03 5595 0326	SANDOWN VETERINARY CLINIC
MY BRO FABIO	SHELLBROOK	Sep 07, 2020	3 Males	PAUL OSBORNE	GOORAMBAT	0439 066 061	SANDOWN VETERINARY CLINIC
MY REDEEMER	BLACK PONTIAC	Sep 01, 2020	3 Males 6 Females	OUR FAMILY (SYN) BRIAN SELLECK	TOORADIN	0431 110 261	WALNUT VETERINARY CLINIC
	MISS BO WICKED	May 24, 2020	1 Males 7 Females	LORNE STARR	BURNSIDE	0407 011 870	CRAIGIEBURN ANIMAL HOSPITAL
	SHOUT OUT LOUD	Aug 12, 2020	6 Males 3 Females	BRIAN BROWN	AXEDALE	0419 700 481	MCIVOR ROAD VET CENTRE
	WALKING ON AIR	Oct 04, 2020	2 Males 4 Females	BERNARD SEYMOUR	WOODVALE	0428 544 551	MCIVOR ROAD VET CENTRE
NITRO BURST	ZIPPING SELMA	Jun 07, 2020	4 Males 1 Females	MELISSA PAYNE	ALMURTA	0438 502 460	SANDOWN VETERINARY CLINIC
NO DONUTS	LIVE WIRE	Jun 12, 2020	3 Males 4 Females	MILLIONAIRES (SYN) JOHN FARRUGIA	MELTON SOUTH	0423 706 781	CRAIGIEBURN ANIMAL HOSPITAL
ORSON ALLEN	ANTARCTIC LASS	Jul 24, 2020	3 Males 4 Females	PETER KNOTT	CARNEGIE	0431 148 462	SANDOWN VETERINARY CLINIC
	DASH TA FAME	Jun 29, 2020	4 Males 3 Females	WAT THO POW (SYN) SAM WATSON	WEST FOOTSCRAY	0434 536 039	SANDOWN VETERINARY CLINIC
	MEPUNGA MIDGET	Aug 18, 2020	4 Males 5 Females	ALAN RIPPON	NIRRANDA SOUTH	0400 692 384	SANDOWN VETERINARY CLINIC
OVER LIMIT	STYLISH PURSUIT	Sep 08, 2020	4 Males 5 Females	NICOLE STANLEY	PORTLAND	0400 072 095	SANDOWN VETERINARY CLINIC

SIRE	DAM	WHELPED	DESCRIPTION	BREEDER	SUBURB	TELEPHONE	FS FACILITY
PETER ROCKET	DESTINI JAGUAR	Aug 14, 2020	5 Males 5 Females	MICHAEL BEWLEY	BACCHUS MARSH	0415581435	CRAIGIEBURN ANIMAL HOSPITAL
RAW ABILITY	TEMPORALIS	Oct 01, 2020	2 Males 7 Females	TABB FAMILY (SYN) MATHEW TABB	LARA	0422 622 998	MCIVOR ROAD VET CENTRE
	WHO TOLD LINDYLU	Jun 03, 2020	6 Males 2 Females	EMMA'S BOYS (SYN) BRIAN PARSONS	CORIO	0409 527 216	
RITZA LENNY	ALL DOLLED UP	Aug 05, 2020	7 Males 4 Females	SCOTT JAMES	Waubra	0408 580 866	SANDOWN VETERINARY CLINIC
	MISS LEGALITY	May 01, 2020	3 Males 5 Females	ROBERT BATE	TAYLORS HILL	0405 307 203	SANDOWN VETERINARY CLINIC
SENNACHIE	SLY SHIRAZ	Sep 20, 2020	6 Males 5 Females	GARRY CONDON	HAMPTON PARK	0417 553 824	SANDOWN VETERINARY CLINIC
STAGGER	QATAR GIRL	Jul 01, 2020	3 Males 3 Females	JAY ROBINSON	HAZELDENE	0439 735 208	
SULZANTI	PANDORA'S PROOF	Oct 09, 2020	1 Males 6 Females	JASON WICKHAM	LARA	0423 526 446	MCIVOR ROAD VET CENTRE
SUPERIOR PANAMA	DASHA	Aug 12, 2020	5 Males 6 Females	HARRY MANOLITSIS	LYSTERFIELD SOUTH	0431 006 611	SANDOWN VETERINARY CLINIC
	TRIXTA ROX	May 07, 2020	6 Males 3 Females	MICHAEL LEWIS	KARINGAL CENTRE	0438 388 580	SANDOWN VETERINARY CLINIC
WHISKEY RIOT	FLASH RIOT	Jul 11, 2020	4 Males 2 Females	KEITH HELLMUTH	PEARCEDALE	0438 336 930	
	MYRNIONG LANA	Aug 11, 2020	5 Males 3 Females	KYLEE OSBORNE	BACCHUS MARSH	0424 197 741	SANDOWN VETERINARY CLINIC
WINDY MILLAR	BLACK JAPIKA	Jul 11, 2020	2 Males 2 Females	RONALD WILKINSON	PYALONG	0427 072 164	CRAIGIEBURN ANIMAL HOSPITAL
ZAMBORA BROCKIE	AEROPLANE GRACE	Jul 09, 2020	5 Males 2 Females	JOHN FINN	GROVEDALE	0418 122 458	Sandown Veterinary Clinic
	APPOINTED	Jul 17, 2020	8 Males 3 Females	AMANDA TULLIO	TAYLORS LAKES	0421569259	SANDOWN VETERINARY CLINIC
	CRYMELON HOLLY	May 23, 2020	5 Males 5 Females	CRYMELON KENNELS (SYN) IAN BIBBY	WARRACKNABEAL	0419 006 676	MCIVOR ROAD VET CENTRE
	LA BELLA RIOT	Jun 21, 2020	4 Females	Sandra Camden-Bermingham	MOUNT MERCER	0409240851	
	MAGIC DIVA	May 07, 2020	1 Males	NADINE BROWN	LARA	0410 528 022	SANDOWN VETERINARY CLINIC
	MEPUNGA NYSSA	May 20, 2020	2 Males 2 Females	ROSS LYONS	LONGLEA	0438 894 742	MCIVOR ROAD VET CENTRE
	MIAMI FERNANDO	Jul 11, 2020	3 Males 3 Females	John Ahern	CARISBROOK	0427109120	MCIVOR ROAD VET CENTRE
	MIX OFF HARMONY	Sep 02, 2020	9 Males 4 Females	DALTON TEMPLETON	TRAFALGAR	0438614534	SANDOWN VETERINARY CLINIC
	PANDORA'S COMET	Sep 28, 2020	2 Males 4 Females	John Ahern	CARISBROOK	0427109120	MCIVOR ROAD VET CENTRE
	SEGOVIA	Oct 01, 2020	6 Males 3 Females	SEE THE DREAM (SYN) SERGIO BUCCILLI	CANTERBURY	0418 103 147	SANDOWN VETERINARY CLINIC
	TYCHE ONYX	May 16, 2020	2 Males 6 Females	KEVIN WARD	MOUNT MORIAC	0407 526 026	CRAIGIEBURN ANIMAL HOSPITAL
	LILLY FOX	Aug 05, 2020	3 Males 5 Females	MICHAEL CARTER	KIALLA	0438 637 893	MCIVOR ROAD VET CENTRE
ZIPPING GARTH	TAMPICO	May 05, 2020	2 Males 1 Females	PAUL OSBORNE	GOORAMBAT	0439 066 061	SANDOWN VETERINARY CLINIC
	ZIPPING MELODY	Jun 23, 2020	4 Males 1 Females	GERALD MCKENNA	KOROIT	0407114488	SANDOWN VETERINARY CLINIC
	ZIPPING RUBY	May 20, 2020	1 Males 3 Females	GREGORY KERR	BAIRNSDALE	0432 068 315	SANDOWN VETERINARY CLINIC
ZULU ZEUS	CHEYANNE	May 14, 2020	2 Males 4 Females	LINDA EDGERTON	BROADFORD	0421 055 510	Sandown Veterinary Clinic

MISSSES

SIRE	DAM	SERVICE DATE	FACILITY
ASTON DEE BEE	ZALL GOOD	Monday, 16 March, 2020	WALNUT VETERINARY CLINIC
	EVI BALE	Sunday, 22 March, 2020	WALNUT VETERINARY CLINIC
	ASTON SHIRAZ	Monday, 04 May, 2020	WALNUT VETERINARY CLINIC
	SAILAWAY JACKIE	Tuesday, 16 June, 2020	WALNUT VETERINARY CLINIC
	ANTIQUE BLONDE	Thursday, 18 June, 2020	SANDOWN VETERINARY CLINIC
	SEDUCING	Saturday, 25 July, 2020	WALNUT VETERINARY CLINIC
	DAINTREE PUZZLE	Tuesday, 28 July, 2020	SANDOWN VETERINARY CLINIC
	JOKARE	Wednesday, 29 July, 2020	CRAIGIEBURN ANIMAL HOSPITAL
AUSSIE INFRARED	MEPUNGA BONNIE	Thursday, 30 July, 2020	WALNUT VETERINARY CLINIC
	NATIONAL GIRL	Saturday, 16 May, 2020	WALNUT VETERINARY CLINIC
	ZIPPING EMMA	Wednesday, 10 June, 2020	MAFFRA VETERINARY CENTRE
	AMLIN JEWEL	Thursday, 02 July, 2020	SANDOWN VETERINARY CLINIC
BEWILDERING	ETIQUETTE	Wednesday, 22 January, 2020	CRAIGIEBURN ANIMAL HOSPITAL
FERAL FRANKY	EURO MARSH	Thursday, 16 July, 2020	MCIVOR ROAD VET CENTRE
FERNANDO BALE	BELLA SHIMA	Wednesday, 18 March, 2020	MCIVOR ROAD VET CENTRE
	LOCHINVAR DASH	Monday, 30 March, 2020	MCIVOR ROAD VET CENTRE
	POLJUICE POTION	Saturday, 09 May, 2020	CRAIGIEBURN ANIMAL HOSPITAL
	MORE IN STORE	Wednesday, 10 June, 2020	CRAIGIEBURN ANIMAL HOSPITAL
	SAETTA	Wednesday, 17 June, 2020	MAFFRA VETERINARY CENTRE
	ACOUSTIC LEE	Thursday, 30 July, 2020	CRAIGIEBURN ANIMAL HOSPITAL
GOT SOME WHEELS	INVICTUS STUNNA	Friday, 14 February, 2020	
HASTEN SLOWLY	WELL ADVERTISED	Wednesday, 13 May, 2020	CRAIGIEBURN ANIMAL HOSPITAL
HONE IN	THATCHER	Thursday, 25 June, 2020	CRAIGIEBURN ANIMAL HOSPITAL

SIRE	DAM	SERVICE DATE	FACILITY
KONOMI	AEROPLANE INDY	Sunday, 26 July, 2020	ADELAIDE PLAINS VET SURGERY
LAUGHIL DUKE	DYNA GYPSY	Monday, 10 August, 2020	ADELAIDE PLAINS VET SURGERY
MEPUNGA BLAZER	STAR DESIRE	Thursday, 27 February, 2020	WALNUT VETERINARY CLINIC
	MA MA KEOGH	Monday, 15 June, 2020	THE VET GROUP
	MOSS MAGIC	Tuesday, 23 June, 2020	SANDOWN VETERINARY CLINIC
	KALANI KLARE	Sunday, 12 July, 2020	ADELAIDE PLAINS VET SURGERY
	WEBLEC ROSE	Sunday, 16 August, 2020	ADELAIDE PLAINS VET SURGERY
MOREIRA	AMELIA STAR	Friday, 14 February, 2020	SANDOWN VETERINARY CLINIC
MY REDEEMER	DREAM BALE	Tuesday, 07 January, 2020	SANDOWN VETERINARY CLINIC
	BARELLEN OPAL	Friday, 17 January, 2020	CRAIGIEBURN ANIMAL HOSPITAL
ORSON ALLEN	SISCO BELLA	Wednesday, 25 March, 2020	CRAIGIEBURN ANIMAL HOSPITAL
	HEAVEN ROCKS	Saturday, 22 August, 2020	CRAIGIEBURN ANIMAL HOSPITAL
SENNACHIE	HONEY TWIST	Tuesday, 30 June, 2020	WALNUT VETERINARY CLINIC
SH AVATAR	TIJUANA ICON	Tuesday, 11 August, 2020	CRAIGIEBURN ANIMAL HOSPITAL
STAGGER	DYNA FAME	Wednesday, 22 July, 2020	
VELOCETTE	SANDAVE GEM	Sunday, 23 February, 2020	MCIVOR ROAD VET CENTRE
XTREME KNOCKA	ROLL 'EM MAGGIE	Sunday, 07 June, 2020	CRAIGIEBURN ANIMAL HOSPITAL
ZAMBORA BROCKIE	ON THE RIZE	Sunday, 16 February, 2020	
	ETHICS	Sunday, 23 February, 2020	TERANG VETERINARY CLINIC
	DANYO'S NIA	Friday, 13 March, 2020	ADELAIDE PLAINS VET SURGERY
	OHANA SPARKLES	Monday, 30 March, 2020	MAFFRA VETERINARY CENTRE
	DEFINITELY TWO	Wednesday, 01 April, 2020	SANDOWN VETERINARY CLINIC
	SO FINE	Monday, 27 April, 2020	WALNUT VETERINARY CLINIC
	PENNSYLVANIA IS	Friday, 01 May, 2020	WALNUT VETERINARY CLINIC
	FEIKUAI DONNA	Wednesday, 20 May, 2020	WALNUT VETERINARY CLINIC
	HOT DREAM	Sunday, 05 July, 2020	SANDOWN VETERINARY CLINIC
	GOT THE ATTITUDE	Saturday, 01 August, 2020	SANDOWN VETERINARY CLINIC

A beautiful bond between greyhound and trainer

BY VICTORIA SHAW

Veteran greyhound trainer Ron Wilkinson has been around long enough to have seen it all, but how often do any of us see a greyhound with more than 100 starts winning a race against high quality opposition? Not often.

Ron, 79, has been lucky enough to have had one such greyhound in his kennel, his homebred marvel of consistency – Hodge's Lane.

Hodge's Lane recently contested his 102nd and final race start, scoring at a very tidy \$22 for the win.

With impressive race career statistics – 23 wins, 24 seconds and 13 thirds – Hodge's Lane was in the money in 59 per cent of his races and amassed more than \$47,000 in prize money.

But there is much more to this enduring relationship than merely a working association between man and dog.

Life was very exciting for Ron and Faye towards the end of 2017, with Hodge's Lane a promising greyhound on the rise, but suddenly they were dealt an almighty setback.

Ron attended a routine health care appointment and never made it home. Medical staff took swift and decisive action as Ron required an immediate lifesaving heart operation.

Large medical expenses can be both overwhelming and difficult to plan for, but thanks to the racetrack success of Hodge's Lane the enormous costs associated with heart surgery were largely taken care of.

Last month, on 29 October, Ron celebrated his 79th birthday and, incredibly, Hodge's Lane turned five on the same day. A wonderful coincidence or perhaps the relationship between greyhound and trainer runs far deeper than that.

Hodge's Lane now embarks on retirement as Ron and Faye's pet, and one thing is certain, the greyhound will always have a very special place in Ron's heart.

Read the full story at grv.org.au.



CLUB/TRIALS DIRECTORY

BALLARAT

Ballarat Greyhound Racing Club
President: Paul Armstrong
General Manager: Rod Ward
Tel: (03) 5335 7201
Fax: (03) 5335 7104
Email: ballarat@grv.org.au
Website: ballarat.grv.org.au
Address: Corner of Rubicon & Sutton Streets, Ballarat
Postal: PO Box 175R, Redan, 3350

TRIALS

Monday Afternoon – (PEN): Following the race meeting. Capacity of 30 (including Satisfactory Trials).

Call the Office at 9AM.

Tuesday – (ARM): 8:30AM to 2:30PM.
Bookings open Friday at 9AM.

Wednesday Night – No Trials 'After the Last' during COVID-19 Pandemic

Thursday – (ARM): 8:30AM to 3:30PM.
Bookings open Monday at 9AM

Saturday Morning – (PEN): 9.00am to 9.45am – Pen Trials (ARM): 8.00am to 9.00am – 9.45am to 1.00pm

BENDIGO

Bendigo Greyhound Racing Association
President: Robert Douglas
Manager: Troy Harley
Tel: (03) 5449 3322
Fax: (03) 5449 3348
Email: bendigo@grv.org.au
Website: bendigo.grv.org.au
Address: Lords Raceway, Mclvor Highway, Junortoun
Postal: PO Box 7, Junortoun, 3551

TRIALS

Monday - (Break In/Education): 8:00am

Tuesday - (Arm): 8:00am - Until completion

Wednesday - (Pen): Following the race meeting

Thursday - (Break In/Education): 8:00am - Until completion

Friday - (Pen): Following the race meeting

Saturday - (Arm): 8:00am - Until completion

CRANBOURNE

Cranbourne Greyhound Racing Club
President: Barry Toner
Manager: Joe Jackson (acting)
Tel: (03) 5996 2393
Fax: (03) 5996 3493
Email: cranbourne@grv.org.au
Website: cranbourne.grv.org.au
Address: Grant Street, Cranbourne, VIC
Postal: PO Box 55, Cranbourne, 3977

TRIALS

Monday – (Pen) After last race. Contact office Mon.

Tuesday – (Arm) Start 1pm. Fastrack from Mon 9am.

Wednesday – (Pen) After last race. Contact office Wed.

Thursday – (Arm) Start 9am. Fastrack from Tue 9am.

GEELONG

Geelong Greyhound Racing Club
Chairman: Brian Parkinson
General Manager: Ray Bartolo
Tel: (03) 5275 2298
Fax: (03) 5275 5211
Email: geelong@grv.org.au
Website: geelong.grv.org.au
Address: Beckley Park, Broderick Road, Corio
Postal: PO Box 125, Corio, 3214

TRIALS

We are on FASTTRACK.

TRIAL SESSION TIMES, effective as of 1st September 2020

Please note: ALL trial sessions will now be FREE of charge (terms & conditions apply)

Satisfactory trials (only available Tuesday, post-race meeting trial sessions)

Trial booking procedure: All trials can be booked online via FastTrack, or by calling our office.

All trials are arm trials.

Monday - 8:30 am – 3:30 pm

Outside track, (400, 460, 680) 8.30 am – 11.30 am

Inside track, (520, BTB, 596) 12:15 pm – 3:30 pm

FastTrack online bookings open Friday 9 am, 3 days prior or by calling the office.

Wednesday - 8:30 am – 3:30 pm

Outside track, (400, 460, 680) 8.30 am – 11.30 am

Inside track, (520, BTB, 596) 12:15 pm – 3:30 pm

FastTrack online bookings open Sunday 9 am, 3 days prior or by calling the office.

Saturday – 8:30 am – 3:30 pm

Outside track, (400, 460, 680) 8.30 am – 11.30 am

Inside track, (520, BTB, 596) 12:15 pm – 3:30 pm

FastTrack online bookings open Wednesday 9 am, 3 days prior or by calling the office.

Booking opening times for Tuesday are from 12.00 pm on the same day as trial session.

Any queries can be made by contacting the office on 5275 2298.

HEALESVILLE

Healesville Greyhound Association Inc.
Manager: Cynthia O'Brien
Tel: (03) 5962 2420
Email: healesville@grv.org.au
Website: healesville.grv.org.au
Address: Healesville Sports Complex, Cnr Don & Donald Roads, Healesville
Postal: PO Box 1170, Healesville, 3777

TRIALS

NO TRIALS on Sundays.

Trials after races on Tuesdays and Fridays. Satisfactory trials must be booked before 11.00am on race days.

Trials on Wednesdays as from 1st October (Daylight Savings times)

8.30am – 300m

10.30am – 350m

ALL bookings via FastTrack – Bookings open at 9.00am on Monday and close at 3.00pm on Tuesday unless booked out earlier.

HORSHAM

Horsham Greyhound Racing Club
President: Ian Bibby
Manager: Justin Brilliant
Tel: (03) 5382 4329
Fax: (03) 5382 1949
Email: horsham@grv.org.au
Website: horsham.grv.org.au
Address: Horsham Showgrounds, Horsham.
Postal: PO Box 458, Horsham, 3400

TRIALS

Tuesday - (Pen) Following the race meeting

Friday Morning Arm Session 8am – 10.30am Book with Club

Bookings essential by phoning the club.

THE MEADOWS

Melbourne Greyhound Racing Association
Chairman: Eddie Caruana
CEO: Ashley Baker
Tel: (03) 9355 5222
Fax: (03) 9355 5255
Email: meadows@grv.org.au
Website: themeadows.org.au
Address: 80 Northcorp Boulevard Broadmeadows VIC.
Postal: PO Box 103, Campbellfield, 3061

TRIALS

Monday - (Arm & Pen): Trials start at 10am.

Bookings from 12pm on Sunday & close at 9.30am sharp on Monday.

Wednesday - (Pen) Trials start after the last race. Bookings from 8:30am Wednesday.

Thursday - (Arm & Pen) Trials start at 10am.

Bookings from 12pm on Wednesday & close

at 9:30am sharp on Thursday.

No trials public holidays.

SALE

Sale Greyhound Racing Club
President: Les Hughes
Manager: Peter Johnston
Tel: (03) 5144 2148
Fax: (03) 5144 1910
Email: sale@grv.org.au
Website: salegreyhoundclub.com.au
Address: Sale Showgrounds, Sale Maffra Road
Postal: PO Box 44, Sale 3850

TRIALS

Tuesday - (Arm): 7:30am – 4:00pm

Note: Extra Tuesday twilight session to run 5:00pm – 7:00pm from 19 November

Wednesday - (Arm): 7:30am – 8:30am

Wednesday - (Pen): 8:45am – 9:00am

Wednesday - (Arm): 9:10am – 2:00pm

Saturday - (Arm): 7:30am – 1:30pm

Sunday – (Pen): Following the race meetings

The bullring is operational with sessions on Mondays, Wednesday and Thursdays.

Bookings with the Club only.

SANDOWN

Sandown Greyhound Racing Club
 Chairman: Neil Brown
 CEO: Adrian Scott
 Tel: (03) 9546 9511
 Fax: (03) 9558 4453
 Email: sandown@grv.org.au
 Website: sandowngreyhounds.com.au
 Address: View Road, Springvale, VIC.
 Postal: PO Box 13, Springvale 3171

TRIALS

Wednesday - (Pen): 8:00am – 8:50am
 (booked backwards), (Arm) 9:00am -
 2:00pm, Bookings open 9am Tuesday
 Saturday - (Arm): 8:00am – 1:00pm.
 Bookings open Thursday 9am

SHEPPARTON

Shepparton Greyhound Racing Club
 President: Tracey Fothergill
 Manager: Carl McGrath
 Tel: (03) 5823 5577
 Fax: (03) 5823 5522
 Email: shepparton@grv.org.au
 Website: shepparton.grv.org.au
 Address: 7580 Goulburn Valley Highway,
 Kialla.
 Postal: PO Box 7528, Shepparton 3632

TRIALS

Monday - (Pen): Following the race meeting
 Wednesday - (Arm): 8:00am – 3:00pm
 Thursday - (Pen): Following the race
 meeting
 Saturday - (Arm): 8:00am – 3:00pm
 Please note: Following night race
 meetings the Shepparton GRC will conduct
 satisfactory and field trials only.

TRARALGON

Traralgon Greyhound Racing Club
 President: Don Haley
 Manager: Steven Clarke
 Tel: (03) 5174 2135
 Fax: (03) 5174 6877
 Email: traralgon@grv.org.au
 Website: traralgon.grv.org.au
 Address: Glenview Park, McNairn Road,
 Traralgon
 Postal: PO Box 329, Traralgon 3844

TRIALS

No trials due to track closure.

WARRAGUL

Warragul Greyhound Racing Club
 President: Bob Iredale
 Manager: Anthony Mitchell
 Tel: (03) 5623 1867
 Fax: (03) 5623 4252
 Email: warragul@grv.org.au
 Website: warragul.grv.org.au
 Address: Logan Park, Warragul VIC
 Postal: PO Box 313, Warragul 3820

TRIALS

Tuesday – (Pen): Following the race
 meeting
 Wednesday – (Arm): 12:00pm to 5:00pm
 Thursday - (Pen): Following the race
 meeting
 Friday – (Arm): 8:00am to 1:00pm

WARRNAMBOOL

Warrnambool Greyhound Racing Club
 President: Mick White
 Manager: Craig Monigatti
 Tel: (03) 5561 2766
 Fax: (03) 5561 2768
 Email: warrnambool@grv.org.au
 Website: warrnambool.grv.org.au
 Address: Warrnambool Showgrounds,
 Koroit Street, Warrnambool
 Postal: PO Box 115, Warrnambool 3280

TRIALS

Monday - Fortnightly after the race meeting
 (pen trials, all distances)
 Tuesday 8am to finish (arm & pen)- on
 weeks when we don't race on the Monday
 Thursday (Pen) following the last race
 Saturdays - Arm and Pen until finish.
 Contact club prior to 3pm Friday to express
 interest in a field trial on Saturday mornings

**COURSING CLUB
DIRECTORY AND
TRIALS****BENALLA**

Benalla Plumpton Coursing Club
 President: Michelle Saunders
 Mobile: 0400 077 617
 Address: Benalla Racecourse, Midland
 Highway, Benalla, VIC 3672

TRIALS

340m approx. Grass surface (Drag).
 Bookings by appointment

LANG LANG

320m approx. Grass surface (Drag)
 Lang Lang Coursing Club
 President: John Clay
 Mobile: 0419 559 738
 Address: McDonalds Track, Lang Lang,
 VIC 3984

TRIALS

320m approx. Grass surface (Drag)
 Sunday - 9.30am until completion, weather
 permitting. Bookings via phone 0468 587
 533 on Fridays 10am-4pm

LONGWOOD

Longwood Coursing Club
 President: Gary Robinson
 Tel: (03) 5798 1407
 Mobile: 0439 981 270
 Address: Longwood Sports Complex,
 Down Street, Longwood,
 VIC, 3665

TRIALS

350m approx. Grass surface (Trolley)
 Sunday - 8.30am – 10am (by order of
 arrival)
 Tuesday - Booked Trials only

For more information, please contact the relevant race club directly.

Bookings are essential for all trial sessions conducted at greyhound tracks in Victoria, except Longwood. Bookings can be made in person, by phone or via FastTrack (except Benalla, Horsham, Lang Lang, and Longwood).

Pen trials conducted after race meetings are required to be booked on the day by no later than race 8 via phone.

Satisfactory Trials are conducted following TAB race meetings. Trial sessions are subject to late change and weather conditions.